



**වාර්ෂික කාර්ය සාධන වාර්තාව හා ගිණුම්
வருடாந்த செயலாற்று அறிக்கையும் கணக்கறிக்கையும்
Annual Performance Report & Accounts
2016**

D.S.Senanayake Statue
Senanayaka Samudraya
Ampara.

**දිස්ත්‍රික් ලේකම් කාර්යාලය - අම්පාර.
மாவட்ட செயலகம் - அம்பாறை.
District Secretariat - Ampara.**

වාර්ෂික කාර්ය සාධන වාර්තාව හා ගිණුම්
වருடාந்த செயலாற்று அறிக்கையும்
கணக்கறிக்கையும்

ANNUAL PERFORMANCE REPORT &
ACCOUNTS

2016

දිස්ත්‍රික් ලේකම් කාර්යාලය අම්පාර
மாவட்ட செயலகம் - அம்பாறை
DISTRICT SECRETARIAT AMPARA

Contents

Subject	Page No.
01. District Administration	
1.1 Message of the District Secretary	06
1.2 Mission,Vision,Statement, Objectives & Activities of the District Secretariat	09
1.3 Historical Background of Ampara District	10
1.4 District Secretariat and Attached Institution	12
1.5 Grama Niladhary Divisions and Organization chart of the District Secretariat	13
1.6 Duty and Responsible of the Administration Branch of the District Secretariat	16
1.7 Cadre Details of the District Secretariat & Divisional Secretariats	17
1.8 Details of Government Quarters assigned to the District Secretariat	18
1.9 Details of Charges for Circuit Bungalow	19
1.10 Details of Income earned from Circuit Bungalow	20
1.11 Infomation of District Secretariat	21
02 Populations	
2.1 Total Population of Ampara District by DS Division on Sex Ratio	23
2.2 Total Population of Ampara District by DS Division on Age Group	24
03. Agriculture	
3.1 Agriculture Industries of Ampara District	26
3.2 Targeted, Sown and Harvested Extent of Paddy by DS Division 2016	27
3.3 Details of Crops Cultivation DS Division Level 2016 (Vegetable)	28
3.4 Details of Crops Cultivation DS Division Level 2016(Other Field Crops)	29
04. Education	
4.1 School Type and Medium-2015	31
4.2 National School Type and Medium-2015	32
4.3 Provincial School Type and Medium-2015	33
4.4 Education Zone and Education Division-2015	34
05. Development	
5.1 District Secretariat development Works-(270) 2016	37
5.2 Home Affairs development Works- (121) 2016	38
5.3 Ministry of Resettlement Works-(145) 2016	39
5.4 Summary of the Development Projects Progress 2016	40

5.5	Progress Report of Construction of Cultural Centers 2016	41
5.6	Activities of District Samurdhi Unit	42
5.7.	Information of Office of the Assistant Commissioner of Elections	43
5.8	Information of Office of the Deputy Land Commissioner	45
5.9	Activities of Land Use Planning Department	46
6.0	Appropriation Account	
6.1	Activities of the Account Branch (Finance)	48
6.2	Activities of the Account Branch (Finance Control)	49
6.3	Appropriation Account by Programme-2016	50
6.4	Recurrent Expenditure by Project -2016	51
6.5	Capital Expenditure by Project- 2016	52
6.6	Capital Expenditure by Project- 2016	53
6.7	Financial Expenditure by Project of each Programme -2016	55
6.8	Summary of Financial Expenditure by Programme -2016	56
6.9	Summary of Control Accounts for Advance & Deposit Accounts-2016	57
6.10.	Expenditure Reports of Other Ministries and Department	58
6.11.	Revenue Details 2016	59

01

DISTRICT ADMINISTRATION

1.1-Massage of the District Secretary



I have great pleasure in submitting the Performance Report of District Secretariat, Ampara for the year 2016.

Ampara District administration along with 4415 square kilometers extent of land was established in the year 1961. This District made its steps towards the victory today even though, it has travelled through the very difficult path by facing nasty war and affected on the development activities.

This District consists of 44% Muslim, 38.4% Sinhala, 17.1% Tamil and 0.5% other community are living together harmoniously and it is our expectation to build an environment to transfer the kind each other.

This report has been prepared as per the Financial Circular No 402 of 12.09.2002 based on the service provided by the District and Divisional Secretariats and financial achievement.

I dedicate my heartiest gratitude to the District religious leaders, political leaders, head of department of central and provincial council, authorities, boards and non-governmental organizations for the assistance rendered to achieve the goals of “Glorious district with most innovated people” mentioned in this performance report.

Especially, I dedicate my gratitude to both Additional Government Agents, Chief Accountant, Director Planning and other Directors, District Engineer, Assistant District Secretary, Accountant and Administrative Officers including all staff and Divisional Secretaries including all staff for providing greatest support for good public service rendered in the whole year at Divisional Secretariats.

A handwritten signature in black ink, consisting of a stylized 'T' followed by a horizontal line and a small flourish.

Thusitha P. Wanigasinghe
Government Agent/District Secretary,
Ampara District

“Glorious District with Most Innovated People” – Ampara District

The present Ampara district called as ancient Digamadulla Colony is situated in the Eastern Province of Sri Lanka. There are flat hill land here and there in this district. This land 200 feet is upper from the sea level and hill 1000 feet is upper from sea level. This land consist all resources. There are paddy continues land from Uva range to the east coast and there are lot of charming places. The lagoons are beautiful in the rainy season. The paddy filed look very charm during the monsoon period and watch tower will be setup here and there by Sinhala, Tamil and Muslim farmers in these paddy field. It is easy to find wild life such as elephants, pigs and peacock during the harvesting period and goats and cattle will be in the paddy land after the harvesting. During the month of July, it will be in heavy dried condition.

In 1924, these area ware administrated in the name Wevehampattu by the then government officers under the Government Agent of Batticaloa. As Mr Veddave was the first load of the country, the ancient irrigation system were rapidly reconstructed under his administration. Based on the above development works, DS Senanayaka started the Galoya Development Project. The Ampara is a good creation of agriculture colony scheme. Ampara District was established as an administrative district in the year 1961 including previous administrative unit of Wevehampattu, Binthannapattu, Panamapattu, Sammanthuraipattu, Nintavurpattu and Akkraipattu. Mr. J.D.S.D. Liyanage assumed his duty on 10th April, 1961 as first Government Agent of Ampara District. In the year 1980, the Dehiyattakandya area which was under “C” Zone of Mahaweli Development Scheme was attached to this district. There are four electoral division such as Sammanthurai, Pottuvil, Kalmunai and Ampara and 20 Divisional Secretariat Divisions, 503 Grama Niladhary Divisions and 614 villages including 02 Municipal Council, 01 Urban Council, 17 Pradeshiya Sabhas and 14 Police Stations in the present Ampara District. This district is very beautiful with 115 km extent of seashore, hill and flat land, rivers and lake crossing the villages, fruitful paddy land and free wild life. There are 199 Buddhist Temples, 186 Hindu Temples, 338 Muslim Mosques and 66 Christian Temples that are reflecting various ethnic culture in the Ampara district.

As per census report of last year, total population of Ampara District are 691,000 and total families are 205,211, as 44% of Muslim, 38.4% of Sinhala, 17.1% of Tamil and 0.5% of other community peoples are living together with harmonally.

This district consist of 444,539.10 hectares of land extent and populated land extent is 154 square kilometers. There are 159,208.20 hectares agriculture land, 11,243.30 hectares town area, 28,569.20 hectares catchment area, 2,212.60 hectares wet zone, 227,005.40 hectares forest and range land and 21,300.40 hectares migration zone. In this district, annual rain fall is 1886 ml and average heat is 29.81 C.

Ampara District was rewarded as “Jathie Vee Bissa” for the agriculture contribution with yield of 22.5% in the paddy cultivation through the large irrigation system of Senanayaka Samudraya and this district contributes to the national food production through the sugar cane cultivation, additional crops cultivation, animal husbandry and fisheries.

Ampara district is able to provide higher status in the education sector through the University, Advance Technological Institute, College of Education, Technical College, Vocational Training Centre, National Schools and other developed schools. It is proud that national and international rewards for productivity to Ampara health service.

Ampara district has been converted as an attractive place for local and foreign tourists with specific places such as Galoya National Park, Kumana Natural Park, Lahugala National Park and Arukampai Surfing Place and also significant religious and cultural places such as Rajagala, Deegawapiya, Magul Maha Viharai, Buddangala, Uhanthai Temple and Kadatkaraipalli.

1.2-Mission, Vision and Characters of District Secretariat, Ampara

“Mission”

Peoples of the Ampara District will be adopted as satisfied customers by providing good service.

“Vision”

Providing instructions, guidance, and assistance to the Government and non-Governmental Organization of the District to provide a good service to the Peoples of the District, as a implementing agency of utilizing the government policies, laws, natural resources and finance to make peace among multi-cultural societies and to develop the livelihood of peoples of the Digamadulla.

Characters

Warmly welcome

Listening to the Customers

Kindly response

Providing service to customers at the relevant place

Listening to the issues of the customers

Attempt to provide solution to issues of the customers

Making peaceful and suitable environment to customers

Finding solutions for the issues at once

Preserving the respect of the customers

Do not waste the time of the customers

1.3-Historical Background of Ampara District

The ancient Sri Lanka consisted of three kingdoms such as Ruhunu, Rajarata and Mayarata. The historical evidence ratifies that the history of Deegawapi or Digamadulla kingdom which was considered as a vital wealthiest resource of Ruhunu kingdom prolongs up to the period of Lord Buddha. In terms of the ancient chronicle stories, Vijaya came to Sri Lanka when Lord Buddha reached the utmost stage of blissful rest of lying on the bed of his nibbana. When Lord Buddha was graciously present in Sri Lanka for the third time at the invitation of king, Manik Akkitha Nagar, it is said that he was graciously present in the Deegawapi area.

Ampara emerged as a settlement of Aryans during the monarchy of Bandugasdeva who ruled the country after Vijaya. The chronicle stories state that Thiyaugamam established by the Prince, Thiyahu who is a brother of the queen of Bandugasdeva king, Kathiyana Kumari was later called in the names of Deegawapi and Digamadulla.

Bandugabaya Prince, son of Dugagamini brought Anuradhapura under his rule and made it as the capital of his monarchy. Thereafter, Digamadulla was ruled as an administrative area under Anuradhapura kingdom. It also prospered as a vital granary. When the Polonaruwa kingdom declined, its reign was pushed to the south western area and Ampara emerged as a forest reserve. The Major Irrigational Technology of Mahasena expanded from the area of Viththanna in the east to Kandy through Thamankaduwa and Serunuwera. Ruhunu area cannot be easily forgotten for its self-development activity. When we travel around the areas of the Ampara District, we may witness several ruins related with irrigation development that had been developed for a long time.

Professor R.L. Brokiyar says that Galoya was the food land of Veddha society before the historical inscriptions of Sri Lanka was maintained. This is seen in the inscriptions up to the period of 03rd century A.D. established by the prehistoric Aryan society.

The sentences “ye rethiya abaraya ithiya akanatha ithika theramahinda therathuwa” has been inscribed in an inscription located near the Dagoba ruins in the area. In terms of the inscription, the Dagoba has been brought for the development of the Island. This has been introduced as the Dagobas of Mahinda and Iddithiya. This ratified the information/news in Mahawamsa regarding the visit of Mahinda and Iddithiya to Sri Lanka. News confirms that Dagobas were constructed throughout the Island burying tusks/ivories as treasures under them. In the meantime, the letter obtained in Rajagala area says about a woman called Rabitha who is the queen of King Dutugemunu. This is a historically important letter. Likewise, the inscription gives the evidence about the matrimonial relationship between the families of the Queen Nanthamithrai and King Dugemunu. According to this inscription and inscription in Omunugala in the Ampara District prove that the daughter of the king Dutugemunu and son of Nanthamithri got married.

The scholars accept/recognize that the inscription of 10th century as an extra ordinary historical resource. In terms of the inscription, it is proven that Sachchiriyasingha lived in Ampara during his ultimate period. The inscription says that the village referred to in the inscription was a self-sufficient village and things were not brought from the outer areas for the sale. The said inscription further refers to that the area was ruled by the kingdom of Anuradhapura.

Historical evidence proves that Ampara was a prominent place during the Polonnaruwa regime. Digamadulla had immensely assisted the campaign led by Maha Vijayabahu to redeem the country from the Cholar dominance. The inscription also mentions about the wars made by him in his mission. Further information says that Digamadulla had been under the dominance of Suhara and Rabeena. The book published by the University of Sri Lanka on the history of Sri Lanka says that the king Maha Parakiramabahu warred with Suhara Rabeena in Ampara in order to confiscate the tusks/ivories. This book also reveals that the right/entitlement Thalava priests during the period of Sri Lanka history belongs Deegawapi. According to the Deegawapi book explaining the precious terms, the King Keerthi Raja Singhan during the period of 1756 visited Deegawapi and reconstructed the Deegawapi Dagoba and paid the homage to the priest of the viharaya. The inscriptive notes that were seen in the Dagoba entrance on the west until the recent time, that have lost their beauty now belongs the inscriptive tradition of Kandy rule.

The contribution of British in the irrigation development made in the Ampara can be pointed out as an important event after the year of 1818, especially the Governor Henry Road visited the eastern province and provided money for the development of irrigation sector. This was a highly valued event. This was a great reason for the British rulers to provide money to reconstruct the irrigation sector. Reconstruction of water reservoirs in the Divulana, Dadayanthalawa and Sagamam in the Ampara District and commencement of Paddipalai river project in 1880 were held under this plan. Under the Paddipalai river project, Ampara tank and Kondawatuwan tank and construction of dams across the Gal Oya river supply water to about 40000 acres, Ampara district was transformed as a stretch of paddy lands.

Thereafter, the fundamental objectives of the Gal Oya Irrigation Project were streamlined and once again Ampara District was formed as the center of development in the east. It should be noted that the ways and means for irrigating water to the lands by constructing reservoirs in high lands was done under the Gal Oya Project. Gal Oya project is a historical one since it was the first time in Sri Lanka that such a project was implemented in Sri Lanka.

According to Coul Brooke and Gamaran Proposal which helped the British to form a new foundation in the British rule of Sri Lanka, Sri Lanka was divided into five provinces. Ampara area had been included in the eastern province. The eastern province also consisted of the districts Batticaloa and Ampara and the areas of Thamankaduwa and Vinthana. The provinces formed so were later divided into districts. Accordingly, the eastern province consisted of Trincomalee and Batticaloa. Digamadulla and Linthanai were under the Batticaloa district. In 1837, Linthanai was merged with the Badulla district. From 1961 up to the establishment of Ampara district, Digamadulla was not brought under any Administrative Divisions.

11.4 District Secretariat and Attached Government Institutions

District Secretariat is situated at the north location away 01km from the center of the town. Most administrative duties of the district will be implemented by this office. The building of the District Secretariat was constructed by using metal under Kaloya Scheme. Most of the peoples call this building as Ampara Kachcheri building. The following offices will be operated at the Kachcheri premises.

SN	Department/Institute/Other Branches
1	District Samurdhi Office
2	District Planning Secretariat
3	Office of the Assistant Commissioner of Elections
4	Office of the Motor Traffic Department
5	General Audit Sub Office
6	District Measurement and Service Unit
7	District Statistical Unit
8	Cultural and Religious Unit
9	District Sports Unit
10	Government Information Unit
11	Office of Deputy Commissioner of Land
12	District Land Resettlement Board
13	District Consumer Affairs Authority Unit
14	Office of Assistant Commissioner of Land (Province)
15	Office of Land Use Planning Department
16	Office of Additional District Registrar
17	Office of Re-awakening Project
18	Seeds Certifying Office of the Department of Agriculture
19	Eastern Province Office of the Export Development Board

1.5-Grama Niladhary Divisions under the District Secretariat.

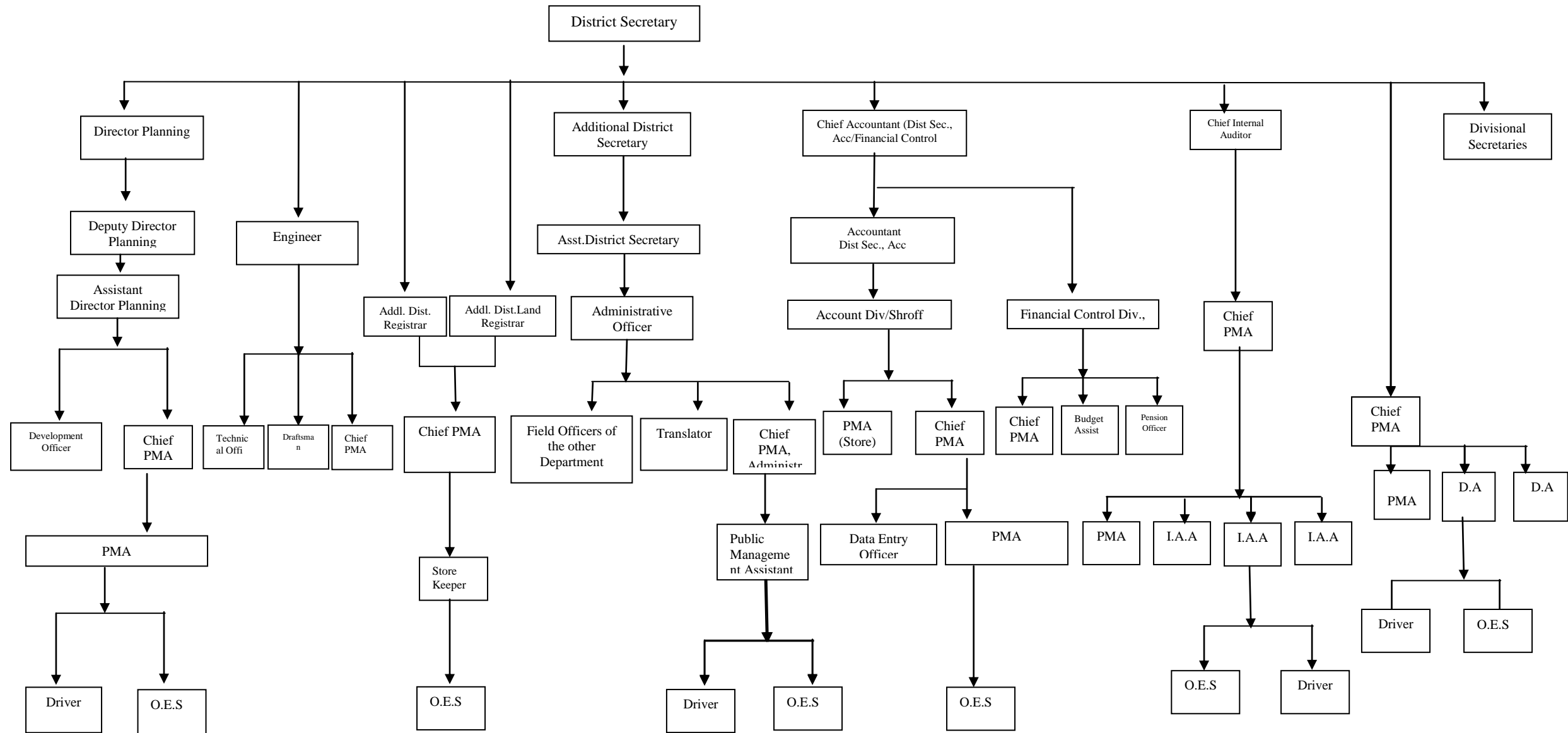
There are 20 DS Divisions and 503 Grama Niladhary Divisions under the District Secretariat.

S.N	D.S Division	No of Grama Niladhary Divisions
1	Dehiyattakandiya	13
2	Padiyatalawa	20
3	Mahoya	17
4	Uhana	55
5	Ampara	22
6	Damana	33
7	Lahugala	12
8	Pottuvil	27
9	Thirukkovil	22
10	Alayativembu	22
11	Akkaraipattu	28
12	Addalaichenai	32
13	Irakkamam	12
14	Nintavur	25
15	Karaitivu	17
16	Sainthamaruthu	17
17	Kalmunai MD	29
18	Kalmunai TD	29
19	Navithanveli	20
20	Sammanthurai	51

1.5-Location of Divisional Secretariat Office in District Secretariat.

S.N	D.S Division	Distance from District Secretary's Office(K.M)
1	Dehiyattakandiya	160
2	Padiyatalawa	84
3	Mahoya	60
4	Uhana	12
5	Ampara	-
6	Damana	17
7	Lahugala	75
8	Pottuvil	83
9	Thirukkovil	40
10	Alayativembu	26
11	Akkaraipattu	26
12	Addalaichenai	29
13	Irakkamam	12
14	Nintavur	26
15	Karaitivu	23
16	Sainthamaruthu	26
17	Kalmunai MD	30
18	Kalmunai TD	30
19	Navithanveli	36
20	Sammanthurai	20

Organization Chart of the District Secretariat, Ampara



1.6-Duty and Responsible of the Administration Branch of District Secretariat

- Administrative works of the Office
- Administrative responsible (Administration, Leave and Railway Warrants)
- Administrative activities and monitoring activities of DS Divisions
- Administrative Activities of the Grama Niladharies
- Food control activities
- Activities of Paddy Purchasing

Duty and Responsible of the Administration and Coordination Branch of District Secretariat

- Administrative works of the Office
- Social Service Activities
- Cultural and Religious Activities
- Human Resource Development and Skill Development Training Activities
- Appointment activities of Birth, Death and Marriages Registrars and Sudden Death Examiners
- Submission of Name List of Juries to Courts
- Organizing District, National events and various programmed at the District Level
- Activities on the public complaints
- Granting assistant to the peoples through Governmental and non Governmental Organizations
- Activities of Disaster Management and Tsunami Reconstruction works
- Activities of issuance of permits for guns and explosives items
- Activities of Circuit Bungalow

1.7-Cadre Details of the District Secretariat and Divisional Secretariats**2017.01.01**

District Secretariat	For 20 Divisional Secretariats				
Designation	No of Approved Cadre	No of Employees working presently	Designation	No of Approved Cadre	No of Employees working presently
District Secretary	01	01	Divisional Secretary	19	18
Additional District Secretary	01	02	Assistant Divisional Secretary	*20	15
Assistant District Secretary	01	01	Accountant	19	18
Chief Accountant	01	01	Administrative Officer	19	04
Chief Internal Auditor	01	01	Grama Niladhary (Administration)	20	06
Accountant	01	01	Development Officers	99	86
Engineer	01	01	Public Management Assistant	504	481
Administrative Officer	01	01	Data Entry Operator	20	02
Public Management Assistant	25	25	Translator	20	02
Budget Assistant	02	01	Grama Niladhary	503	485
Development Assistant/Officer	15	15	Technical Officer	40	26
Translator	02	01	Driver	40	34
Technical Officer	02	03	Office Employee Service	161	171
Data Entry Operator	01	01			
Driver	07	12			
Office Employee Service	12	19			

* An acting Officer has been appointed to Kalmunai Tamil Division, as it is functioned as a sub office.

1.8-Details of Government Quarters Assigned to the District Secretariat

Ampara A type quarters	-	02
Pottuvil A type quarters	-	01
Ampara B type quarters	-	10
Ampara C type quarters	-	18
Ampara D type quarters	-	35
Ampara E type quarters	-	112
Ampara Bachelor quarters	-	17
Total	-	195

Uhana U/6 type quarters	-	10
Uhana U/7 type quarters	-	19
Uhana MSQ type quarters	-	38
Total	-	67

Ampara Quarters 195, Uhana quarters 67	-	Total 262
---	----------	------------------

1.9- Details of Circuit Bungalow of the District Secretariat, Ampara-2016

- ❖ The circuit bungalow is functioned under the observation of the District Secretary.
- ❖ There are 10 rooms including 02 AC rooms with all facilities to stay 20 individuals.

Details of Charges for Circuit Bungalow

Details	For two beds room		
	AC Room with 2 beds	AC Room with 3 beds	Non AC Room
Officers of Ministry of Public Administration and Home Affairs	400.00		300.00
Officers of any other Ministry and Department	600.00		500.00
Individuals of Non Governmental Organization and privates	600.00		500.00

In addition to the above, Rs. 20.00 will be charged for each person service charge.

**1.10-Details of Income Earned from Circuit Bungalow of District Secretariat, Ampara in the
year 2016**

2016	
Month	Amount
January	43,200.00
February	29,000.00
March	58,000.00
April	75,800.00
May	70,000.00
June	45,100.00
July	41,900.00
August	78,500.00
September	71,700.00
October	32,700.00
November	70,200.00
December	79,750.00
Total	695,850.00

1.11 Information of District Secretariat

District	No of Divisional Secretariat	No of GN Division	Population	No of Votes	No of Urban Council	No of Municipal Council	No of Pradeshiya Sabah	Member of Parliament	Member of Provincial Council	No of Cadre		Circuit Bangla
										Approval	Approved	
	20	503		486440	01	02	17	07	14	1564	1387	<p>Under Ministry of Home Affairs – 02</p> <p>Under District Secretariat - 01 –B 10</p>

02

POPULATION

2.1-Number and Percentage of Population By DS Division on Sex and Sex Ratio -2016

SN	DS Division	Male		Female		Total	
		Number	%	Number	%	Number	%
01	Addalaichenai	21,267	47.62	23,392	52.38	44,659	6.462
02	Alayadivembu	11,413	47.76	12,483	52.24	23,896	3.458
03	Akkaraipattu	20,413	48.98	21,263	51.02	41,676	6.031
04	Ampara	22,871	49.04	23,768	50.96	46,639	6.749
05	Damana	20,367	49.47	20,805	50.53	41,172	5.958
06	Dehiyatakandiya	31,931	49.87	32,098	50.13	64,029	9.266
07	Irakkamam	7,599	49.66	7,704	50.34	15,303	2.214
08	Kalmunai MD	22,972	48.37	24,521	51.63	47,493	6.873
09	Kalmunai TD	14,760	46.55	16,949	53.45	31,709	4.588
10	Karaitivu	8,539	47.66	9,378	52.34	17,917	2.592
11	Lahugala	4,649	49.03	4,834	50.97	9,483	1.372
12	Mahoya	11,255	50.79	10,906	49.21	22,161	3.207
13	Navithanveli	9,232	46.33	10,694	53.67	19,926	2.883
14	Nintavur	13,003	46.36	15,046	53.64	28,049	4.059
15	Pottuvil	17,841	48.17	19,198	51.83	37,039	5.360
16	Sainthamaruthu	12,903	47.63	14,189	52.37	27,092	3.920
17	Sammanthurai	31,019	48.21	33,324	51.79	64,343	9.311
18	Thirukkovil	13,464	50.06	13,433	49.94	26,897	3.892
19	Uhana	30,151	48.58	31,914	51.42	62,065	8.981
20	Pathiyathalava	90456	48.51	10,016	51.49	19,452	2.815
	Total	335,085		355,915		691,000	

Source : Statistics Branch, Ampara

2.2 Population and Age Group By DS Division -2015

SN	<i>Divisional Secretariats</i>	<i>Total</i>	<i>Less than 18 Years</i>	<i>Over 18 Years</i>
01	Addalaichenai	44,659	14,652	30,097
02	Alayadivembu	23,896	6,511	17,385
03	Akkaraipattu	41,676	13,257	28,419
04	Ampara	46,639	12,071	34,568
05	Damana	41,172	14,097	27,075
06	Dehiyatakandiya	64,029	17,336	46,693
07	Irakkamam	15,303	5,267	10,036
08	Kalmunai MD	47,493	12,343	35,150
09	Kalmunai TD	31,709	15,318	16,391
10	Karaitivu	17,917	5,174	12,743
11	Lahugala	9,483	2,576	6,907
12	Mahoya	22,161	6,290	15,871
13	Navithanveli	19,926	5,242	14,684
14	Nintavur	28,049	7,061	20,988
15	Pottuvil	37,039	12,129	24,910
16	Sainthamaruthu	27,092	4,895	22,197
17	Sammanthurai	64,343	21,038	43,305
18	Thirukkovil	26,897	7,253	19,644
19	Uhana	62,065	16,661	45,404
20	Pathiyathalava	19,452	5,479	13,973
	Total	728,963	194,654	51,796

03

AGRICULTURE



3.1 Agriculture Industries of Ampara District

Ampara District contributes an important role in the Paddy production of Sri Lanka and majority peoples of the Ampara District are cultivating paddy for their livelihood.

In addition to the paddy cultivation, sugar cane, Vegetables, chilies and other crops are cultivated in the Ampara district.

Ampara District has granted 20 percentages in the total rice production.

The farmers of the district not only do cultivation using minor and major, but they do animal husbandry such as cow and chicken.

Types of Paddy sown in the Ampara District

Types of Paddy	Harvesting Period
BG 450	4 ½ Months (White long)
BG 94-1	3 ½ Months (White long)
BG 358	3 ½ Months Samba
AT 307	3 Months Bola
BG 300	3 ½ Months Bola
AT 362	3 ½ Months (Red long)
AT308	3 Months Samba

Names of the Government Farms in the Ampara District

- ❖ Malwatta Farm
- ❖ District Training Centre, Wavinna



3.2 Targeted, Sown and Harvested Extent and Production of Paddy by Division Level 2016 Yala

Crop:- Paddy

#	DS Division	Targeted Extent(Hec)			Sown Extent(Hec)			Harvested Extent(Hec)			Production (Mt)		
		By Irrigation		Total	By Irrigation		Total	By Irrigation		Total	By Irrigation		Total
		Major	Minor		Major	Minor		Major	Minor		Major	Minor	
1.	Pottuvil	1,402	422.0	1,824	1,250	412	1,662	1,250	412	1,662	6,450	1,868	8,318
2.	Thirukkivil	947	599	1,573	954	488	1,442	954	488	1,442	4,980	2,042	7,022
3.	Alayadivembu	3,745	383	4,128	3,750	378	4,128	3,750	378	4,128	22,278.4	1,574	23,852.4
4.	Akkaraipattu	5,713	-	5,713	5,697.4	-	5,697.4	5,697.4	-	5,697.4	30,124.4	-	30,124.4
5.	Irakkamam	1,435	127	1,562	1,555	121	1,676	1,555	121	1,676	8,230.34	642.9	8,873.24
6.	Addalaichenai	3,047	-	3,047	3,279	-	3,279	3,279	-	3,279	17,948	-	17,948
7.	Nintavur	2,796	-	2,796	2,880	-	2,880	2,880	-	2,880	17,204	-	17,204
8.	Karaitivu	587	-	587	584	-	584	584	-	584	3,610	-	3,610
9.	Sainthamaruthu	265	-	265	286	-	286	286	-	286	1,612	-	1,612
10.	Kalmunai	500	203	703	614	157.6	771.6	614	157.6	771.6	4,017	745	4,762
11.	Navithanvely	5,371	240	5,611	4,708.6	130	4838.6	4,708.6	130	4838.6	24,481.6	650	25,131.6
12.	Sammanthurai	9,078	-	9,078	9131.4	-	9131.4	9131.4	-	9131.4	53,875.26	-	53,875.26
13.	Uhana	8,358	246	8,604	8,878.6	246	9,124.6	8,878.6	246	9,124.6	45,623	1,150	46,773
14.	Ampara	2,277	225	2,502	2,695	280	2,975	2,696	280	2,976	12,397	1,334	13,731
15.	Damana	7,102	296	7,398	6,560	284	6,844	6,560	284	6,844	34,790	1,363.1	36,153.1
16.	Lahugala	481	192	673	479	190	669	479	190	669	2,155.5	760	2,915.5
17.	Pathiyanthalawa	42.50	37.50	80	41	30	71	41	30	71	319.5	120	439.5
18.	Magaoya	1,153.50	554.50	1,708	1,145	535	1,680	1,145	535	1,680	5,287.5	2,140	7,427.5
19.	Dehittakandiya	10,458	-	10,458	10,152	-	10,152	10,152	-	10,152	55,836	-	55,836
	Total	64,758	3,525	68,283	64,640	3,251.6	67,891.6	64,641	3,251.6	67,892.6	35,1219.5	1,4389	3,65,608.5

3.3 Details of Crops Cultivation DS Division Level 2016/2017 Maha (Ha)

Crops:-Vegetable

	DS Division	Target	Cultivated	Target	Cultivated	Target	Cultivated	Target	Cultivated	Target	Cultivated	Target	Cultivated	Target	Cultivated	Target	Cultivated
		Mea		Bitter Gourd		Snake Gourd		Tomato		Cucumber		Brinjal		Luffa		Okra	
1	Pottuvil	21.00	3.75	4.50	6.00	2.40	3.00	4.00	3.00	2.00	-	33.80	41.50	5.70	2.00	18.20	16.50
2	Thirukkovil	45.00	9.00	6.80	11.25	4.90	6.50	10.00	2.75	6.00	2.00	25.60	20.00	4.80	2.75	12.10	10.50
3	Alayadivembu	7.00	0.35	1.10	0.30	2.40	0.70	1.50	0.25	3.00	0.20	5.10	1.25	1.90	0.30	-	4.25
4	Akkaraipattu	3.00	0.69	-	0.96	1.20	0.98	-	0.07	2.00	0.02	2.00	5.50	1.00	0.99	0.60	2.38
5	Irakkamam	10.00	4.00	2.30	1.75	0.80	1.25	-	-	-	-	5.10	4.00	1.90	0.75	2.40	2.00
6	Addalaichenai	1.00	-	3.40	3.02	2.40	1.70	-	2.06	-	1.05	20.50	5.50	3.80	2.77	15.20	5.57
7	Nintavur	3.00	0.30	-	0.75	-	0.37	-	-	-	0.04	5.10	3.19	1.00	0.31	1.80	0.73
8	Karaitivu	1.00	1.02	-	0.51	0.40	0.30	-	-	-	0.30	2.00	0.71	1.90	-	-	0.70
9	Sainthamaruthu	1.00	1.67	-	2.37	-	1.65	-	1.97	-	1.19	0.50	3.19	0.50	2.01	-	1.74
10	Kalmunai	1.00	0.40	2.30	0.30	0.80	0.30	-	-	-	-	3.10	1.60	2.90	0.40	3.00	1.20
11	Navithanvely	1.00	3.25	2.30	1.80	2.40	1.15	-	-	-	-	2.00	2.05	2.90	2.15	4.90	3.90
12	Sammanthurai	3.00	5.75	2.30	3.05	2.00	1.11	-	0.57	-	0.55	8.20	5.55	3.80	2.25	4.90	4.80
13	Uhana	7.00	23.67	18.20	13.73	22.30	19.61	2.50	2.36	-	14.60	18.40	20.64	39.20	21.13	24.30	14.61
14	Ampara	16.00	5.35	13.60	7.60	12.20	7.40	2.50	0.80	2.00	5.70	20.50	7.25	14.40	8.20	7.30	8.50
15	Damana	-	18.67	18.20	6.37	10.60	5.65	-	3.15	-	2.61	32.80	13.74	14.40	8.31	30.30	14.48
16	Lahugala	7.00	3.00	12.00	6.80	9.00	5.60	7.00	5.00	12.50	6.00	15.50	6.00	10.50	3.40	11.50	2.50
17	Pathiyanthalawa	40.00	20.00	20.00	10.00	20.00	15.00	15.00	10.00	35.00	10.00	71.00	40.00	20.00	8.00	88.00	42.00
18	Magaoya	50.00	20.00	20.00	10.00	20.00	10.00	15.00	8.00	25.00	7.30	53.00	28.00	20.00	8.00	43.00	26.00
19	Dehittakandiya	-	-	12.40	10.00	8.60	5.50	-	-	-	-	2.80	1.70	6.50	4.80	12.60	10.60
#	Total	217	120.87														

3.4 Details of Crops Cultivation DS Division Level 2016/2017 Maha (Ha)

Crops:-Other Field Crops

#	DS Division	Target	Cultivated	Target	Cultivated	Target	Cultivated	Target	Cultivated	Target	Cultivated	Target	Cultivated
		Maize		Cowpea		Ground nut		Green Gram		Chilies		Soya	
01	Pottuvil	90	62.50	12	0.25	58.20	74	15	1.5	106	75	-	-
02	Thirukkivil	396	47	13	5	588.8	151	17	5	57	16	-	-
03	Alayadivembu	15	19	6	-	-	10	10	-	8	3	-	-
04	Akkaraipattu	2	70.48	7	-	2.20	0.10	17	-	4	3.55	-	0.35
05	Irakkamam	36	63.50	8	0.75	2.9	5.5	22	-	5	3.5	-	0.25
06	Addalaichenai	70	81.60	10	1	26.2	29.2	12	3	7	3.87	-	-
07	Nintavur	3	3.07	5	-	10.9	1.254	7	0.311	5	3.34	-	0.12
08	Karaitivu	4	4	3	-	0.7	0.95	1	0.8	3	3.2	-	-
09	Sainthamaruthu	0	3.3	-	-	-	-	-	0.01	1	2.02	-	-
10	Kalmunai	4	1.70	-	0.11	-	0.1	1	0.25	9	2.3	-	-
11	Navithanvely	15	10.70	15	-	2.9	2.5	10	1.5	8	4.3	-	-
12	Sammanthurai	19	17.75	5	0.92	5.1	10.1	20	5.5	11	13.07	-	0.6
13	Uhana	180	243.60	50	30.14	36.3	33.93	25	16.98	47	31.83	-	0.2
14	Ampara	198	372.40	15	28.80	5.80	10.20	15	35.7	11	18	-	-
15	Damana	2815	2537.50	22	33.31	40	36.45	20	17.12	110	61.32	-	2
16	Lahugala	407	401.50	320	46	146.50	136	20.5	-	20.5	13.5	-	-
17	Pathiyanthalawa	4225	3977	1520	352	44	-	122	20	71	15	-	-
18	Magaoya	3744	2373.25	2260	156	21.	4	192	35	91	20	-	-
19	Dehittakandiya	262	240	22.30	21	19.9	15	-	-	39.4	21	3.3	1.5
#	Total	12485	10466.85	4293	675.28	1011	520.284	526.5	142.671	313.8	3.3	3.3	5.02

04

EDUCATION

4.1 Functioning School by Type and Medium-2016

Div Secretariats	Functioning School-Tamil Medium				Functioning School-Tamil Medium				Total
	1AB	1C	11	111	1AB	1C	11	111	
Dehiyatakandiya	-	-	-	-	2	5	21	19	47
Pathiyathalava	-	-	-	-	1	2	7	10	20
Mahoya	-	-	-	-	1	3	9	7	20
Uhana	-	-	-	-	1	8	22	5	36
Ampara	-	-	-	-	3	6	8	3	20
Damana	-	-	-	-	1	10	8	11	30
Lahugala	-	-	1	-	-	2	-	3	6
Pottuvil	1	4	3	18	-	-	1	1	28
Thirukkovil	2	3	3	16	-	-	-	-	24
Alayadivembu	2	1	5	4	-	-	-	-	12
Nintavur	1	2	8	4	-	-	-	-	15
Karaitivu	1	1	4	4	-	-	-	-	10
Akkaraipattu	3	1	8	11	-	-	-	-	23
Addalachchenai	1	3	8	13		1	1	-	27
Sammanthurai	2	6	11	17	-	-	-	-	36
Irakkamam	1	1	6	4	-	-	-	1	13
Navithanveli	1	6	5	10	-	-	-	-	22
Sainthamaruthu	1	1	2	5	-	-	-	-	9
Kalmunai MD	3	3	5	6	-	-	-	-	17
Kalmunai TD	4	6	6	4	-	-	-	-	20
Total	23	38	75	116	9	37	77	60	435

4.2-National School Type & Medium-2016

Div Secretariats	National School-Tamil Medium			National School-Sinhala Medium			Total
	Boys	Girls	Mixed	Boys	Girls	Mixed	
Dehiyatakandiya	-	-	-	-	-	1	1
Pathiyathalava	-	-	-	-	-	1	1
Mahoya	-	-	-	-	-	-	-
Uhana	-	-	-	-	-	-	-
Ampara	-	-	-	-	1	1	2
Damana	-	-	-	-	-	-	-
Lahugala	-	-	-	-	-	-	-
Pottuvil	-	-	-	-	-	-	-
Thirukkovil	-	-	-	-	-	-	-
Alayadivembu	-	-	1	-	-	-	1
Nintavur	-	-	1	-	-	-	1
Karaitivu	-	-	-	-	-	-	-
Akkaraipattu	-	-	1	-	-	-	1
Addalachchenai	-	-	1	-	-	-	1
Sammanthurai	-	-	1	-	-	-	1
Irakkamam	-	-	-	-	-	-	-
Navithanveli	-	-	-	-	-	-	-
Sainthamaruthu	1	-	-	-	-	-	1
Kalmunai MD	-	1	-	-	-	-	1
Kalmunai TD	-	-	1	-	-	-	1
Total	1	1	6	-	1	3	12

4.3- Provincial Schools-2016

Div Secretariats	Provincial School-Tamil Medium			Provincial School-Sinhala Medium			Total
	Boys	Girls	Mixed	Boys	Girls	Mixed	
Dehiyatakandiya	-	-	-	-	-	46	46
Pathiyathalava	-	-	-	-	-	19	19
Mahoya	-	-	-	-	-	20	20
Uhana	-	-	-	-	-	36	36
Ampara	-	-	1	-	1	17	19
Damana	-	-	-	-	-	30	30
Lahugala	-	-	1	-	-	5	6
Pottuvil	1	-	25	-	-	2	28
Thirukkivil	-	-	24	-	-	-	24
Alayadivembu	-	-	11	-	-	-	11
Nintavur	1	1	11	-	-	-	13
Karaitivu	1	1	8	-	-	-	10
Akkaraipattu	1	1	20	-	-	-	22
Addalachchenai	4	8	12	1	1	-	26
Sammanthurai	-	1	34	-	-	-	35
Irakkamam	-	-	12	-	-	1	13
Navithanveli	-	-	22	-	-	-	22
Sainthamaruthu	-	-	8	-	-	-	8
Kalmunai MD	-	1	16	-	-	-	17
Kalmunai TD	-	-	19	-	-	-	19
Total	8	13	224	1	2	176	424

4.4-No of School by Divisional Level Accounting to Educational Zone & Educational Division-2016

Educational Zone	Educational Division	D.S.Division
Ampara	Ampara	Ampara
	Uhana	Uhana
	Damana	Damana
	Lahugala	Lahugala
		Kalmunai Tamil
		Allayativembu
		Pottuvil
Akkaraipattu	Addalachchenai	Addalachchenai
	Akkaraipattu	Akkaraipattu
	Pottuvil	Pottuvil
Dehiyattakandiya	Dehiyattakandiya West	Dehiyattakandiya
	Dehiyattakandiya East	Dehiyattakandiya
Kalmunai	Kalmunai Muslim	Kalmunai Muslim
	Kalmunai Tamil	Kalmunai Tamil
	Sainthamaruthu	Sainthamaruthu
	Karaithivu	Karaithivu
	Ninthavur	Ninthavur
Mahaoya	Mahaoya	Mahaoya
	Pathiyathalava	Pathiyathalava

Sammanthurai	Sammanthurai	Sammanthurai
		Irraggamam
		Navithanveli
Thirukkovil	Thirukkovil	Thirukkovil
		Allayadivembu
		Addalachchenai
		Pottuvil
		Lahugala
7	17	

05

DEVELOPMENT

Development Work in Ampara District 2016

5.1 District Secretariat Ampara Head – 270

No	Program me	project	Comp. project	Allocation	Expenditure	%
01	Building for Graduates	1	1	14,300,000	14,299,753.82	100
02	Div.Secre.Ampara	1	1	12,730,000	12,729,995.55	100
03	Div.Secre.Uhana	1	1	2,120,000	2,120,000.00	100
04	Div.Secre.Addalachcenai	1	1	4,300,000	4,299,827.65	100
05	Div.Secre.Sammanthurai	1	1	900,000	9,000,000.00	100
06	Div.Secre.Uhana(D.S Quarters)	1	1	7,000,000	6,999,984.70	100
07	Div.Secre.D'Kandiya(D.S Quarters)	1	1	6,500,000	6,499,994.18	100
08	Div.Secre.Lahugala(D.S Quarters)	1	1	7,800,000	7,799,993.50	100

Development Work in Ampara District 2016

5.2Ministry of Home Affairs Head – 121

No	Program me	project	Comp. project	Allocation	Expenditure	%
01	Landscaping D/S Office Pathiyathalava	1	1	10,500,000	7,184,318.77	68.42
02	Landscaping D/S Office Lahugala	1	1	10,500,000	10,379,832.40	98.86
03	Landscaping D/S Office Uhana	1	1	6,000,000	5,999,851.25	100
04	Landscaping D/S Office .Addalachcenai	1	1	5,000,000	5,000,000.00	100
05	Toilets & Soakage pit of office Quarters	1	1	4,000,000	3,999,419.93	99.99
06	Construction of D/S Quarters-Uhana	1	1	4,000,000	3,696,595.69	92.41
07	Toilet Complex of B10 Government Quarters	1	1	1,622,000	1,618,320.00	99.77
08	Construction of D/S Quarters- Lahugala	1	1	1,138,000	1,024,682.02	90.04
09	Toilet Complex at D/S Office - Ampara	1	1	2,240,000	1,989,582.80	88.82

Development Work in Ampara District 2016

5.3 Ministry of Resettlement – 145

No	Program me	project	Comp. project	Allocation(Mn)	Expenditure(Mn)	%
01	Housing	165	165	132	132	100
02	Partly Damages	40	39	8	7.79	99
03	Sanitation	400	400	22	21.8	98
04	Water Program me 1.Well	106	106	46	46	100
	Water Program me 1.Conection	717	717			
05	Livelihood Program me	565	565	55	54.95	99
06	Infrastructure	03	03	10	10	100

5.4 Summary of the Development Projects Progress
As at 31st December 2016

District : Ampara

#	Description	No of Total Projects	Physical Progress		Finacial Progress		
			100% Completed	100% Completed (%)	Total Allocation (Rs.Mn)	Expenditure (Rs.Mn)	Financial Progress %
1	DCB	836	835	99.88	121.98	117.94	96.69
2	RIDP	464	464	100	405.00	380.95	94.06
3	CONTINUATION	93	88	94.62	208.22	198.67	95.41
4	DEVELOPMENT OF PLAY GROUND	34	34	100.00	67.25	59.60	88.62
5	ECONOMIC ENGAGEMENT PROGRAMME	9	9	100.00	6.90	6.90	100.00
6	LINE MINISTRY PROJECTS	34	34	100.00	31.01	30.16	97.26
7	CBG	183	181	98.91	24.51	17.91	73.07
Total		1653	1645	693.41	864.87	812.13	645.12

5.5 Progress Report of Construction of Cultural Centers Ampara District

Ministry of Internal Affairs Wayamba Development & Culture Affairs

#	Project Name	Estimate Amount (With VAT)	Contract Amount with VAT (15%)	Tot. Paymets Up to 2015/12/31	Payments in 2016	Total Payments	Bala. Payments	Allocation Balance For 2017	Allocation Required for 2017
1	construction of Cultural Center - Damana - Stage II	7,043,110.69	6,632,972.01	0.00	4,154,687.28	4,154,687.28	2,478,284.73	0.00	2,700,000.00
2	construction of Cultural Center - Mahaoya	24,590,854.80	24,574,108.50	4,000,000.00	0.00	4,000,000.00	20,574,108.50	0.00	21,400,000.00
3	construction of Cultural Center - Irakkamam	15,002,875.72	14,178,737.29	4,000,000.00	4,604,568.36	8,604,568.36	5,574,168.93	0.00	6,000,000.00
4	construction of Cultural Center - Uhana	24,590,854.80	24,542,886.58	4,400,986.88	2,500,000.00	6,900,986.88	17,641,899.70	16,000,000.00	2,400,000.00
5	Construction of Henanigala South Indigenous People Center	8,084,436.50	8,560,901.30	3,800,654.91	4,760,240.69	8,560,895.60	0.00	2,967,014.00	0.00
Total		79,312,132.51	78,489,605.67	16,201,641.79	16,019,496.33	32,221,138.12	46,268,461.85	18,967,014.00	32,500,000.00

5.6 Activities of District Samurdhi Unit-2016

01.Details of District Samurdhi Officers &Staff

#	Designation	No of Approved Carders	No of Available Carders	No of Vacancy
1	Director	1	1	-
2	Accountant	1	-	1
3	Promotion Officer	1	1	-
4	Divineguma Manager	133	107	26
5	Development officer	.	2	-
6	Divineguma Development officer	1147	843	304
7	Management Assistant	23	13	10
8	Computer Assistant	21	-	21
9	Office Assistant	22	1	21
10	Driver	3	2	1
	Total	1352	970	384

02.Physical &Financial Progress of2016.12.31 “Jeewanapaya” Program me .

	Allocation Received	Imp rest Received	No of Approved Projects	No of Implemented Projects	No of Completed Projects	Projects Cost	Administration Cost(D.S office)	Administration Cost(District office)
Total	29,329,900	19,268,364.5	948	941	902	19,002,180.88	187,272.14	94,407.47

03 . 331-2-2-3-2502 Vote of Divineguma Development Department – Livelihood Development Program me Progress as at 31.12.2016

N O	Subject	Given Allocation	Expenditure	Percentage of Expenditure %
01	Sale Development	7,084,250	3,542,690	50
02	Livelihood Development	14,271,100	14,255,715	100
03	Social Development	12,665,350	12,621,413	100
04	Community based Development	441,800	398,122	90
05	Samurdhi Scurvy Program me	2,262,300	1,753,780	78
06	Model Village Program me	9,000,000	8,962,378	100
	Total	45,724,800	41,534,098	91

04. Details of Samurdhi Bank Societies

01.No: of Samurdhi Bank Societies in the District 43 Account Details of as at 31.12.2016

Serial No	Account No	Deposit Amount(mn)
01	Member Deposit	680,731
02	Non Member Deposit	104,721
03	Child Deposit	67,820
04	Diriyamatha Accounts	43,990
05	Sisuraka Accounts	19,632
06	Group Deposit	413,911
07	Compulsory savings	1,222,798
08	Shares	494,216
	Total	3,047,8149

5.7-Details of Office of the Assistant Commissioner of Election, Ampara District

Details of Electorate Divisions of Digamadulla (Ampara) District

- ❖ “A” Ampara
- ❖ “B” Sammanthurai
- ❖ “C” Kalmunai
- ❖ “D” Pottuvil

No of Registered Voters in the Year 2016

Electorate Division	No of Registered Votes
“A” Ampara	169,574
“B” Sammanthurai	84,200
“C” Kalmunai	73,738
“D” Pottuvil	158,928
Total	478,006

Name of Pradeshiya Sabah of Digamadulla (Ampara) District

1. Dehiyatakandiya
2. Padiyatalawa
3. Mahoya
4. Uhana
5. Ampara (Namaloya)
6. Damana
7. Lahugala
8. Pottuvil
9. Thirukkivil
10. Alayadivembu
11. Akkaraipattu
12. Addalaichenai
13. Nintavur
14. Karaitivu
15. Navithanveli
16. Sammanthurai
17. Irakkamam

18. Name of Municipal Council of Digamadulla (Ampara) District

- ❖ Kalmunai Municipal Council
- ❖ Akkaraipattu Municipal Council

Name of Urban Council of Digamadulla (Ampara) District

- ❖ Ampara Urban Council

Source: - Office of Assistant Commissioner of Election, Ampara

Name of Pradeshiya Sabah**No of Registered Votes**

1.	Dehittakandiya	46,693
2.	Padiyatalawa	13,973
3.	Mahoya	15,871
4.	Uhana	45,404
5.	Ampara (Namaloya)	18,878
6.	Damana	27,075
7.	Lahugala	6,907
8.	Pottuvil	24,910
9.	Thirukkivil	19,644
10.	Alayadivembu	17,385
11.	Akkaraipattu	4,988
12.	Addalaichenai	30,097
13.	Nintavur	20,988
14.	Karaitivu	12,743
15.	Sammanthurai	43,305
16.	Navithanveli	14,684
17.	Irakkamam	10,036

18 Name of Municipal Council

❖	Kalmunai Municipal Council	73,738
❖	Akkaraipattu Municipal Council	23,431

Name of Urban Council

❖	Ampara Urban Council	15,690
---	----------------------	--------

Source: - Office of Assistant Commissioner of Election, Ampara

5.8-Details of Activities done by the Office of the Deputy Commissioner of Land in the year 2016

	<u>Program me</u>	<u>Progress</u>
01	<u>Under the normal Duties</u>	
1.1	Issuing of L.D.O Permits	1932
1.2	Issuing of Long term lease	158
1.3	Deeds	568
02	<u>Under the Bim Sawiya Program me</u>	
2.1	Issuing of L.D.O Permits	554
2.2	Issuing of Long term lease	139
2.3	Deeds	213
03	Releasing of Land for Government Departments	02
04	Releasing of Land for Pradeshiya Sabah	01
05	Releasing of Land for vihara	01
06	Lease Revenue	7,586,254.75
6.1	New tax & lease Rental	2,062,269.25
07	Due lease Revenue	1,860,473.50
7.1	New tax & Due lease	8,345,322.75
08	Issuance of Land for Land less People(1.1+2.1)	2486
09	Conducting Mobile Service	03
10	Building Rehabilitation activities	05
11	Conducting of Division days	12

Source: - Office of Deputy Commissioner of Land, Ampara

5.9Details of the Activities done by the Department of Land Use Planning in the year 2016

Subject	No of Project	No of Projects done in the year 2015	Allocated Amount	Amount Spent	Rate	%
District Land Use Planning Committee Meeting	02	02	6,000	5,990	3,000	99.83
Divisional Land Use Planning Committee Meeting	20	17	30,000	30,000	1,500	100
Awareness Program me	20	19	60,000	49,525	3,000	82.54
Rehabilitation Program for Degraded Land	01	01	50,000	50,000	50,000	100
Implementation Divisional Land Use Plans	20	20	90,000	899,021	4,500	99.83
Special Studies	01	01	80,000	80,000	80,000	100
National Land Use Survey	01	01	142,000	142,000	142,000	100
Village Level Land Use Planning program me	02	02	100,000	100,000	50,000	100
Conservation Plans for Water Sprouts/Sources	01	01	40,000	29,795	40,000	74.48
Preparation of District Land Use Plans	01	01	5,000	5,000	5,000	100
Total	69	65	1,413,000	1,391,331		

Source: - Office of Land Use Planning

06

**APPRO
PRIATION ACCOUNT**

6.1-Duty and Responsible of the Account Branch

I. Duty and Responsible of the Account Branch(Finance)

- Payment activities of District Secretariat, Department and Ministries
- Activities of “B” Advance Account
- Payment activities relevant to the various deposit accounts
- Handing over the Budget and Maintaining Classification Account
- Submitting of Annual, Quarter, Monthly Accounts Summary Reports to the Treasury
- Activities of granting salary to Officers of the District Secretariat
- Activities of Bank Accounts of the District Secretary and preparation of Reconciliation Report
- Preparation and forwarding the Revenue and Expenditure Report and Bank Conciliation Report
- Activities of Stores of the District Secretariat
- Procurement Procedure Activities (Supply & Services)

6.2-Duty and Responsible of the Account Branch(Financial Control)

- Granting allocation to the District Secretariat & Divisional Secretaries of the District
- Granting impress to the District Secretariat & Divisional Secretaries.
- Monitoring financial activities of the Divisional Secretariats of the District and other Ministries
- Supervising the Divisional Secretariats and Inventory survey
- Preparation and submission of the Revenue and Expenditure report
- Monitoring the payments activities of other Ministries and Departments
- Preparation of the “B” Advance Account of District Secretariat and Divisional Secretariats, preparation of Bank reconciliation report
- Coordination of pension activities with Divisional Secretariats, provision of Allocation and Preparation of Reports
- Providing Allocation limit to District Secretariat and Divisional Secretariats under free postal facilities
- Accounts Activities of the District Secretary/Government Agent
- Activities relevant to the losses and damages
- Activities on

6.3-Appropriation Account by Programme- 2016

Expenditure Head :270

Name of Ministry / Department : District Secretariat, Ampara

Programme No & Title : 1 Operational Activities

Summary of Recurrent and Capital Expenditure

	Nature of the Expenditure with DGSA format reference	1 Provision in Budget Estimates	2 Supplementary Provision Supplementary Estimate Allocation	3 Transfers in terms of F.R.66 & 69	4 Total Net Provision (1+2)-+3	5 Total Expenditure	6 Net Effect Saving /(Excess) (4-5)	Page No(Reference to relevant DGSA format)
		Rs.	Rs.	Rs.	Rs.	Rs.	Rs.	
	(a) Recurrent (DGSA 3)	886,000,000	-	34,818,000 (34,818,000)	886,000,000	859,738,743	26,261,257	3
				-				
	(b) Capital (DGSA 4)	77,000,000	-	-	77,000,000	76,878,237	121,763	4,5,6
	Total	963,000,000	-	-	963,000,000	936,616,980	26,383,020	

6.4 Recurrent Expenditure by Project

Expenditure Head : 270		Name of Ministry / Department : District Secretariat, Ampara				
Programme No & Title : 1 Operational Activities						
	1	2	3	4	5	6
Project No/Name, personal emoluments and other expenditure for all projects	Provision in Budget Estimates	Supplimentary Provision and Supplimentary Estimate Allocation	Transfere in terms F.R.66 & 69	Total Net Provision (1+2)+3	Total Expenditure	Net Effect Saving /(Excesses) (4-5)
	Rs.	Rs.	Rs.	Rs.	Rs.	Rs.
Project No. & Title						
1- General Administration and Establishment Services						
Personal Emoluments	68,300,000	-	-	68,300,000	57,869,277	10,430,723
Other Expenditure	71,000,000	-	(1,259,000)	69,741,000	68,316,668	1,424,332
Sub Total	139,300,000	-	(1,259,000)	138,041,000	126,185,946	11,855,054
Project No. & Title						
2 - Divisional Secretariats.						
Personal Emoluments	206,800,000	-	(7,700,000)	206,800,000	204,665,918	2,134,082
			7,700,000			
Other Expenditure	28,550,000	-	(1,089,000)	29,809,000	28,860,806	948,194
			2,348,000			
Sub Total	235,350,000	-	1,259,000	236,609,000	233,526,724	3,082,276
Project No. & Title						
3 - Costal Divisions.						
Personal Emoluments	461,000,000	-	(22,400,000)	461,000,000	451,274,041	9,725,959
			22,400,000			
Other Expenditure	50,350,000	-	(2,370,000)	50,350,000	48,752,032	1,597,968
			2,370,000			
Sub Total	511,350,000	-	-	511,350,000	500,026,073	11,323,927
			-			
Grand Total	886,000,000	-	-	886,000,000	859,738,743	26,261,257

6.5-Capital Expenditure by Project -2016**DGSA 4****Expenditure Head : 270****Name of Ministry / Department : District Secretariat Ampara****Programme No & Title : 1 Operational Activities****Project No & Title : 1- General Administration and Establishment Service**

Object code	Item No	Financed by (Code No)	Description of Items	1	2	3		4	5
				Provision in Annual Estimates Rs	Supplementary Provision Supplementary Estimate Allocation Rs	Transferred in terms F.R.66 & 69	Total Net Provision (1+2) Rs	Total Expenditure Rs	Net Effect Saving /(Excess) (3-4) Rs
			Rehabilitation and Improvement of Capital Assets						
2001		11	Buildings	5,500,000	-	-	5,500,000	5,488,258.00	11,742
2002		11	Plant Machinery and Equipment	1,500,000	-	-	1,500,000	1,499,782.00	218
2003		11	Vehicles	1,650,000	-	-	1,650,000	1,574,843.00	75,157
			Sub Total	8,650,000	-		8,650,000	8,562,883.00	87,117
			Acquisition of Capital Assets						
2102		11	Furniture and Office Equipment	6,400,000	-	-	6,400,000	6,382,941	17,059
2103		11	Plant , Machinery & Equipments	3,500,000	-	-	3,500,000	3,486,098	13,903
2104		11	Buildings & Structures	57,600,000	-	-	57,600,000	56,999,281	719
			Sub Total	66,900,000	-	-	66,900,000	66,868,320	31,681
2401		11	Training and Capacity Building	450,000	-	-	450,000	448,951	1,049
			Sub Total	450,000	-	-	450,000	448,951	1,049
			Total	76,000,000	-	-	76,000,000	75,880,154	119,846

6.6- Capital Expenditure by Project-2016**Expenditure Head : 270****Name of Ministry / Department : District Secretariat Ampara****Programme No & Title : 1 Operational Activities****Project No & Title : 2 Divisional Secretariat**

				1	2		3	4	5
Object cde	Item No	Financed by	Description of Items	Provision in Annual Estimates Rs	Supplementary Provision Supplementary Estimate Allocation Rs	Transferred in terms F.R.66 & 69	Total Net Provision (1+2) Rs	Total Expenditure Rs	Net Effect Saving /(Excess) (3-4) Rs
2401		11	Capacity Building Training and Capacity Building	450,000	-		450,000	449,115	885
			Total	450,000	-		450,000	449,115	885

Capital Expenditure by Project-2014**DGSA-4****Expenditure Head : 270****Name of Ministry / Department : District Secretariat Ampara****Programme No & Title : 1 Operational Activities**

Project No & Title : 3 Coastal Area				1	2		3	4	5
Object code	Item No	Financed by	Description of Items	Provision in Annual Estimates Rs	Supplementary Provision Supplementary Allocation Rs	Transferred in terms F.R.66 & 69	Total Net Provision (1+2) Rs	Total Expenditure Rs	Net Effect Saving /(Excess) (3-4) Rs
2401		11	Capacity Building Training and Capacity Building	550,000	-		550,000	550,000	1,032
				550,000			550,000	548,968	1,032

6.7 Financing of Expenditure by Projects of each Program me

(Total Capital and Recurrent Expenditure according to Project's of a Program me)

Expenditure Head :270

Name of Ministry/Department : District Secretariat Ampara

Program me No & Title : 1 Operational Activities

Financing		Project 01		Project 02		Project 03		Programme Total/Page Total		Percentage of Expenditure (8/7)*100
Code	Description of Items	Net Provision 1	Actual Expenditure 2	Net Provision 3	Actual Expenditure 4	Net Provision 5	Actual Expenditure 6	Net Provision 7	Actual Expenditure 8	
		Rs	Rs	Rs	Rs	Rs	Rs	Rs	Rs	
11	Demostric funds	214,041,000	202,066,099	237,059,000	233,975,839	511,900,000	500,575,041	963,000,000	936,616,980	97
12	Foreign Loan									
13	Foreign Grant									
14	Reimbursable Foreign Loan									
15	Reimbursable Foreign Grant									
16	Couterpart Fund									
17	Foreign Finance related Demostic Cost									
21	Special law services									
	Total	214,041,000	202,066,099	237,059,000	233,975,839	511,900,000	500,575,041	963,000,000	936,616,980	97
Final page total would be equal to programme total, if an extra page is added for each programme.										

6.9 Summary of Control Accounts for Advance & Deposit Accounts 2016

Account No & Name	Account No	As Per Department			Balance as at 2016.12.31
		Books			
		Opening Balance as at 01/01/2016	Debits during the year	Credits during the year	
		Rs.	Rs.	Rs.	Rs.
i. Advance to Public Officers	8493/0/0/270/011	153,364,645	49,994,729	49,145,903	154,213,471
	8493/0/0/270/012	-	49,968,186	6,923,440	1,955,253
		153,364,645	99,962,916	56,069,343	156,168,724
ii. Deposit Accounts					
(i) Security Deposit	6000/0/0/0001/0089	7,622,667	18,149,500	19,825,788	9,298,955
(ii) Tender Deposit	6000/0/0/0002/0119	344,700	4,213,919	6,330,472	2,461,253
(iii) To buy Harvest Deposit	6000/0/0/0011/0599	300,000,000	300,000,000	-	-
(iv) Provincial Deposit	6000/0/0/0014/0013	9,111,238	239,816,192	243,745,514	13,040,559
(iv) Retentions Deposit	6000/0/0/0016/0067	208,208,368	170,409,326	116,081,444	153,880,486
(vi) Compensation Deposit	6000/0/0/0017/0020	4,832,937	22,098,158	18,782,102	1,516,881
(vii) Reimbursement Deposit	6000/0/0/0020/0011	44,130,848	226,716,731	217,480,310	34,894,426
(viii) Dis. Secretariat Deposit	6003/0/0/0046/0000	-	-	-	-

I hereby certify that the closing balances of the above Advance Accounts and Deposit Accounts were reconciled with the respective lists of individuals.

* In stating deposit account numbers, complete account number in the treasury printed copy should be included and non operative accounts should be marked as such.

6.8 Summary of Financing Expenditure by Programme

Expenditure Head : 270
 Programme No & Title : 1 Operational Activities

Name of Ministry / Department : District Secretariate Ampara

Financing		Programme 01*		Programme 02*		Total		Percentage of Expenditure** * (6/5)*100
Code	Description of Items	Net Provision* 1	Actual Expenditure 2	Net Provision* 3	Actual Expenditure 4	Net Provision* 5	Actual Expenditure 6	
		Rs	Rs	Rs	Rs	Rs	Rs	
11	Demostric funds	963,000,000	936,616,980	-	-	963,000,000	936,616,980	97
12	Foreign Loan							
13	Foreign Grant							
14	Reimbursable Foreign Loan							
15	Reimbursable Foreign Grant							
16	Couterpart Fund							
17	Foreign Finance related Demostic Cost							
21	Special law services							
Total		963,000,000	936,616,980	-	-	963,000,000	936,616,980	97

*Please Include figures under each programe according to DGSA5(i)

** Allocations, reffered to 4th colume of DGSA 1

*** State the percentsge without decimal

6.10-Expenditure Report for Other Ministries & Department -2016

Head	Ministries / Department	Total Allocation Received in 2016	Total Expenditure in 2016	Balance/saving	%	Work Done
104	Policy Planning	550,810,621	544,010,665	6,799,956	98.77	Infrastructure Development, Livelihood & purchasing
106	Disaster Management	76,892,720	61,937,482	14,955,238	80.55	House damage Compensation
121	Home Affairs	274,515,670	255,765,368	18,750,302	93.17	Office New Building, Building repairing, Sevapiyasa, Furniture & Office Equipment
136	Sports	61,465,655	57,740,131	3,725,524	93.94	Development of Public Play Ground
145	Resettlement	272,967,751	272,040,679	927,072	99.66	New House for Displace families
163	Culture	24,195,564	16,775,251	7,420,313	69.33	Construction of Culture Centre
166	City Planning	23,160,000	21,944,892	1,215,108	94.75	Earth filling & Sanitation
219	Sports	9,702,000	9,135,236	566,764	94.16	Development of Public Play Ground
270	District Secretary	57,000,000	56,999,281	719	100.00	Office New Building
Total		1,350,709,981.10	1,296,348,985.03	54,360,996.07	95.98	

6.11 Revenue Details - 2016

Amount (MN)	Coad No
16.05	10.03.07.02
5.88	10.03.07.03
0.14	10.03.07.05
4.12	10.03.07.99
2.42	20.02.01.01
-	20.02.01.02
32.18	20.02.01.03
-	20.02.01.99
-	20.02.02.01
7.06	20.02.02.99
-	20.03.01.00
-	20.03.02.06
-	20.03.02.07
1.37	20.03.02.13
70.22	20.03.02.14
4.11	20.03.02.99
-	20.03.03.00
15.53	20.03.99.00
35.37	20.04.01.00
0.10	20.06.02.00
-	20.04.01.02
-	20.04.02.00
0.59	20.03.02.03

