

සීවදේශ කටයුතු ආමානකාංගය
දිස්ත්‍රික් ලේකම් කාර්යාලය - පොලොන්නරුව
විෂද්‍රම් ශීර්ෂය - 275
වාර්ෂික කාර්යසාධන වාර්තාව හා ගිණුම් වාර්තාව - 2016

உள்ளநாட்டு அலுவல்கள் அமைச்சு
மாவட்டச் செயலகம் - பொலன்னறுவை
செலவினத் தலைப்பு - 275
வருடாந்த செயற்றிறன் அறிக்கைகளும் கணக்குகளும் - 2016

**MINISTRY OF HOME AFFAIRS
DISTRICT SECRETARIAT - POLONNARUWA
VOTE NO - 275
ANNUAL PERFORMANCE REPORT & ACCOUNTS - 2016**



Ministry of Home Affairs

District Secretariat – Polonnaruwa

Vote No – 275

Annual Performance Report & Accounts

2016

1	Message of District Secretariat /Government Agent Polonnaruwa	5
2	Introduction	6
2.1	Vision & Mission	7
2.2	Aims of District Secretariat	8
2.3	Activities of District Secretariat	8
3	Introduction on District	9
3.1	District Boundaries	9
3.2	Historical Significance of Polonnaruwa District.	10
3.3	Administrative Structure of Polonnaruwa	11
3.4	Commercial & Economic Activities	11
3.5	Number of Industrial Institutes in the district and percentage	12
3.6	Extent of lands that permanent and semi permanent crops cultivated and harvest	12
3.7.	Seasonal crop cultivation of the district	13
3.8	Population information of the district	13
3.9	Irrigation System	14
4.	Organizational Structure and Approved Cadre	15
4.1	Organizational Structure	15
4.2	Cadre information	17
5	Performance	17
5.1	Progress of General Administration	17
5.1.1	Grama Niladhari Activities	17
5.1.2	Internal Audit	17-18
5.1.3	Activities of the Investigation branch of the District Secretariat	18
5.1.4	Consumers Affairs Authority	19
5.1.5	District Engineers' Office	20
5.1.6	Census & Statistics Section	20
5.1.7	District Agriculture Director's Office	21-22
5.1.8	National Child Protection Authority	23-25
5.1.9	District Disaster Management Unit	26-28
5.1.10	Divineguma Development Department	29
5.1.11	Activities of the Motor Traffic District Office	30
5.1.12	Activities of the Buddhist Affairs Section	31-32
5.1.13	Elections Branch	32
5.1.14	Land Use & Policy Planning Office	33
5.1.15	Women's Affairs Development Section	34-36
5.1.16	District Planning Office	37
5.1.17	Deputy Land Commissioner's Office	37-38
5.1.18	Career Guidance Section	39

5.2	Activities performed by Divisional Secretariats	40
5.2.1	Registration of Births/Marriage/Deaths	40-42
5.2.2	Other License	42-44
5.2.3	Samurdhi ,Social Service & Disaster Relief Service	46-47
5.2.4	Registration of Business Names	47
5.2.5	Electricity Objections	48
5.2.6	Issuance of vehicle revenue license	48-50
5.2.7.	Activities related to Elders	50-51
5.2.8	Activities related to Children	52-53
.5.2.9	Disabled Rehabilitation	54-56
5.2.10	Advance issued under government officer's B account	56-61
5.2.11	Details of Religious & Cultural Affairs	61-62
5.2.12	Other Projects Implemented at Divisional Secretariat Level	
5.3	Finance Management	
5.3.1	Funds received from other departments/Ministries and expenditure - 2016	63
5.3.2	Monthly Revenue collection – Various Depts.: /Ministries	64
5.3.3	Financial Summary – Programme 275	65
5.3.4	Appropriation Account as per the Programmes - 2016	66
5.3.5	Summary of Control Accounts for Advance Account & Deposit Accounts	67

1. Message of the District Secretary.....



In this very special occasion I have the pleasure of issuing this message with a brief review regarding the remarkable and expedite development that has taken place around different scenarios in Polonnaruwa district in 2016 with the guidelines of the Honorable president .

Under “Pibidemu Polonnaruwa” Project various types of development initiatives have taken in the sections of education, health, community service, religious and cultural and accordingly benefits nearly 3.25 billion rupees have rendered for the welfare of Polonnaruwa district. Construction of four storied building for Polonnaruwa district secretariat which is the heart of district administration was commenced and further we could draw the attention regarding the development of infrastructure in all divisional secretaries divisions.

Shortages that were prevailing in school systems for longer periods such as classrooms, laboratories and equipment like desks and chairs could be completed through the utilization of engineering skills of security forces due to the amalgamated endeavor launched by district secretariat and the project office and it was a balanced and a timely effort featured the said development. Further transport facilities could be upgraded through laying asphalt concrete and it reflect road development initiatives taken in the period under review.

With the commitment of all the officers and other stake holders we could reach 100% development targets under rural infrastructure project funded by ministry of national policies and economic affairs and utilizing the funds district decentralized budget and Divineguma development department. It is great achievement in the process.

At this juncture I would like to extend my sincere gratitude to all government, semi government, non government, statutory boards and all the private institutes including finance companies, banks and other institutes, business community and all general public who pay taxes over their thriving efforts.

Ranjith Ariyaratna,
District secretariat,
Polonnaruwa

2. Introduction

The annual performance report of Polonnaruwa District Secretariat for year 2016 is hereby Submitted in terms of the section 2:4 of the Public Finance Circular No: 402 of 12.09.2002

This report has been prepared to prove the Performance by analyzing data and information of finance and other functions of District and 07 Divisional Secretariats of the District.

On .05.2017
At District Secretariat,
Polonnaruwa

Ranjith Ariyaratna
Government Agent/District Secretary
Polonnaruwa

2.1 Vision and Mission.



Vision

TO BECOME THE MOST
PROSPEROUS DISTRICT IN
SRI LANKA



Mission

OUR MISSION IS THE EFFECTIVE
COORDINATION AND
MANEUVER OF RESOURCES
AND INSTITUTES TO
ACCOMPLISH THE PUBLIC
REQUIREMENTS EFFICIENTLY,
REASONABLY, LEGITIMATELY
AND AMIABLY TO ENSURE A
SUSTAINABLE DEVELOPMENT
IN THE DISTRICT.



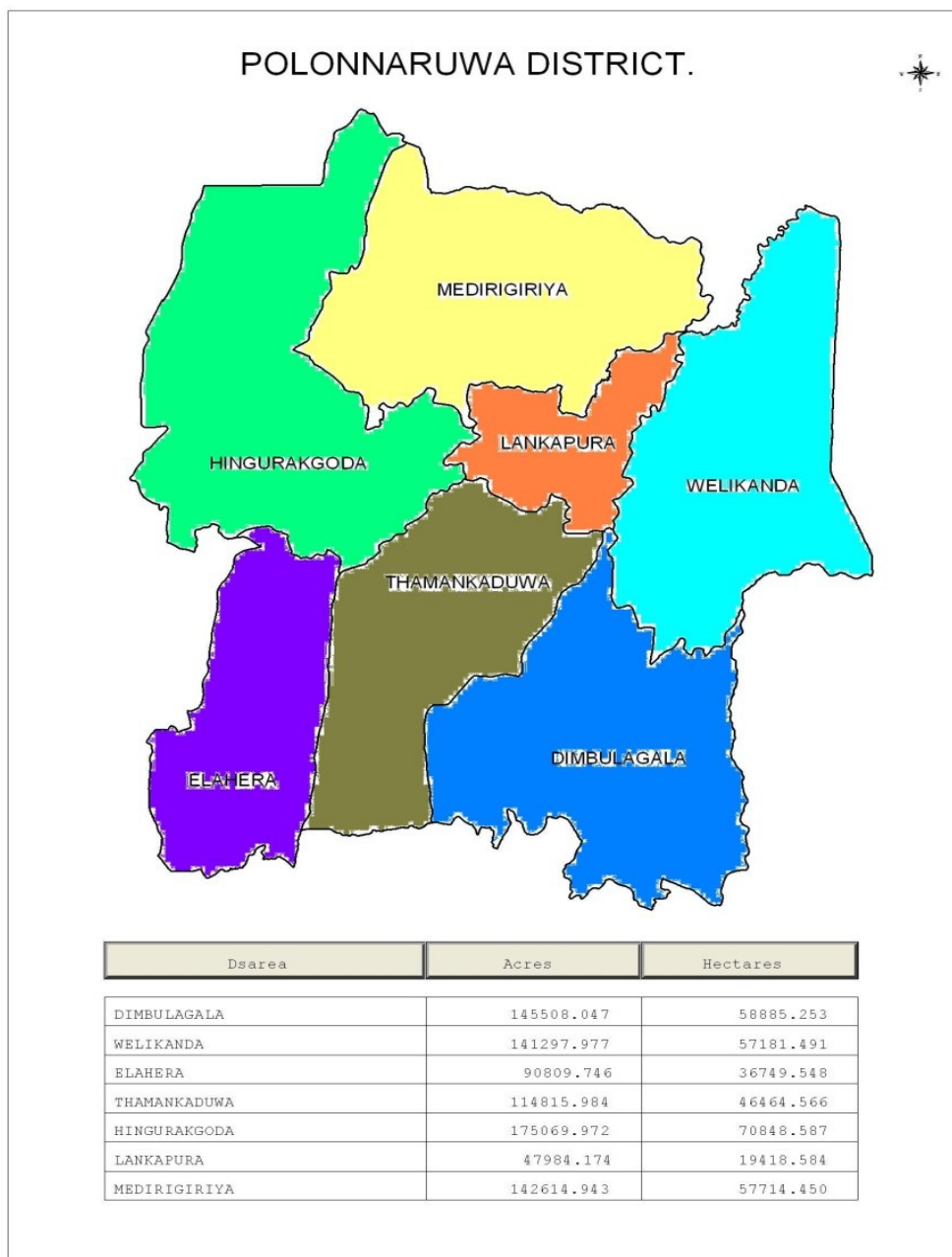
2.2 Aims of District Secretariat

1. Providing an efficient Service.
2. Uplifting living status of rural community.
3. Securing & preservation of cultural values and norms.
4. Readiness to be protected and provide protection from natural disasters.
5. Coordination of activities at divisional and village level.

2.3 Activities of District Secretariat.

- Acting as the district representative of the government.
- Coordinating government departments and institutions.
- Implementing district development plan through district coordinating committee.
- Allocating funds for District and Divisional administrative development affairs and controlling finance.
- Updating voters registries in the Polonnaruwa district and issuing respective certificates.
- Conducting elections noticed by the government.
- Conducting national & district level festivals.
- Determining district prices and implementing disaster and welfare, forest resources, environment, housing constructions, insurance, land use and agricultural development committees.
- Coordinating affairs related to Samurdhi programme with divisional secretariats.
- Training and guiding of small enterprises development programme.
- Certifying and maintaining of measurement instrument under due standards.
- Coordinating the registration of land deeds, births, deaths & marriages.
- Implementing provisions of Consumer Protection Act.
- Issuing driving licenses and implementing provisions of motor vehicle ordinance..
- Co-ordinating pensions programme.
- Career Guidance Activities
- Awareness of productivity improvement.
- Maintaining and updating statistics of various fields in the district.
- Issuing permits for fire arms, explosives and timber information.

Establishment activities of the officers of District and Divisional secretariats.

3. INTRODUCTION OF POLONNARUWA DISTRICT.**3.1 District Boundaries**

Polonnaruwa district is situated in a plain valley of Mahaweli river in North Central Province in Sri Lanka and 216 kilometers away from Colombo and further it is the main city of the district as well. Total land extent of the district is 3337.9 square kilometers. District is located between Northern latitude 7°40" – 8° 21" and Eastern longitude 80° 44" – 81° 20" and elevation is 50-500 meters. District is being bounded to Trincomalee, Batticaloa, Ampara, Matale and Anuradhapura districts.

3.2 Historical Value of Polonnaruwa District



Polonnaruwa is the second capital of Sri Lanka. Having soil and water resources conducive for paddy cultivation compelled the rulers in Anuradhapura to develop Polonnaruwa as a sub capital. In this context Elahera Ela by Wasabha in 67-111 A.D, Minneriya and Kaudulla reservoirs by Mahasen in 274-301 A.D, Thopawewa by Upatissa I in 365-406 A.D and Girithale reservoir by 02nd Aggabodhi was constructed. Polonnaruwa was located in a crucial place in security aspect.

In 10th – 11th centuries struggle erupted between “Solees” and “Pandayas” in India. Victorious “Solees” invaded Anuradhapura in 993 A.D. They selected Polonnaruwa as their capital. Over 70 years they continued their ruling and during this period agricultural economic system were completely destroyed.

King Wijayabahu (1055-1110 A.D) freed the country from “Solee” invaders and renovated all the irrigation systems and religious places that were destroyed by the trespassers. King Parakkramabahu the Great (1153- 1186A.D.) prolonged the development and good work of King Wijayabahu. King Nissankamalla (1187- 1196 A.D.) could also assure the development of his predecessors’. After that no stable ruler came in to power and Kalinga Maga another invader exploited the situation and encroached the area and the capital was shifted to south western part of the country and the whole area was deserted and covered by the jungle. Disappeared relics and other things were uncovered by the department of Archeology initiated during the British ruling. Development activities are executed by Central Cultural Fund. Presently Polonnaruwa has declared as a world heritage city.



3.3 Administrative Structure of Polonnaruwa

Administrative Structure as per Divisional Secretaries divisions							
Divisional Secretaries Division	No: Of Grama Niladhari Wards	No. of Villages	No: of Farming Centers	No: of Local Government Institutes			Police Stations
				U.C./M.C	P.S	P.S.S.O	
Thamankaduwa	55	126	2	0	1	0	1
Dimbulagala	56	78	2	0	1	0	1
Hingurakgoda	53	140	2	0	1	2	3
Medirigiriya	45	111	1	0	1	0	1
Welikanda	30	46	1	0	1	0	1
Elaheera	28	87	1	0	1	0	1
Lankapura	28	49	2	0	1	0	1
Total	295	637	11	0	7	2	9

3.4 Commercial Economic Activities

Average Harvest per Net Hectare in the District according to the season – 2005-2015

Season	Average Harvest per Net Hectare(K.G)				
	Large	Small	Rain Fed	District	Sri Lanka
2005- Yala	4778	4315	0	4761	3976
2005/06- Maha	4955	4460	3627	4911	4070
2006 Yala	4909	4628	0	4899	4263
2006/07- Maha	5143	4821	4514	5119	4299
2007- Yala	5065	4817	0	5057	4543
2007/08- Maha	4947	4529	3927	4900	4181
2008- Yala	5000	4380	0	4971	4195
2008/09-Maha	5280	4680	3783	5223	4421
2009 -Yala	4750	4473	0	4737	4187
2009/10-Maha	5414	4681	3820	5336	4583
2010-Yala	5121	4474	0	5095	4444
2010/11-Maha	3892	3704	2399	3831	2994
2011-Yala	5121	4474	0	5095	4444
2011/12-Maha	5430	4876	4176	5362	4686
2012-Yala	4483	3756	0	4427	4370
2012/13-Maha	5284	4287	4773	5155	4514
2013-Yala	5048	4476	0	4982	4648
2013/14-Maha	1860	2028	1498	1869	1667
2014-Yala	1903	1872	0	1901	1631
2014/15-Maha	5343	5157	4360	5306	4364
2015-Yala	5140	5054	4427	5131	4527

3.5 No: & Percentage of Industries in the District -2016

Number of Industrial Institutes in the district and percentage - 2016		
Institute	Number	Percentage
Mines & Excavations	101	8.4
Food, Beverages and Tobacco	195	16.1
Textile, Garments and Leather Products	214	17.7
Timber, Timber Products and Furniture	126	10.4
Paper Products & Printing	33	2.7
Chemicals, Petroleum , Rubber and Plastic	48	4.0
Non Metallic Petroleum Products	131	10.8
Basic Metallic Industries, Metallic Products, Plant &	21	1.7
Other Manufacturing Industries	326	27.0
Water associated activities & water supply	13	1.1
Total	1208	100

3.6 Extent of lands that Permanent & Semi Permanent Crops Cultivated and Harvest

Crop	Extent of Land Cultivated		Harvest	
	Fructify	Not Fructify	Unit	Quantity
Pepper	66.67	43	Kg.	49,785
Arecant	60.58	40.26	Kg.	383,457
Cashew	136.68	82.62	In 1000s	32,531
Orange	211.47	105.23	In Nos.	1,764,750
Lime	199.98	124.06	In Nos.	3,383,000
Mango	522.4	281.25	In Nos.	6,002,800
Jack	401.69	238.81	In Nos.	2,333,680
Bread fruit	84.16	53.37	In Nos.	1,470,850
Cane sugar	0	0.4	In Nos.	-
plantain	578.12	318.71	In 1000s	295,363
Papaya	82.32	62.24	In Nos.	458,640
Pineapple	45.67	18.13	In Nos.	170,950
Passion fruit	0	0.5	In Nos.	-
Bettle	26.63	13.66	In 1000s	8,865

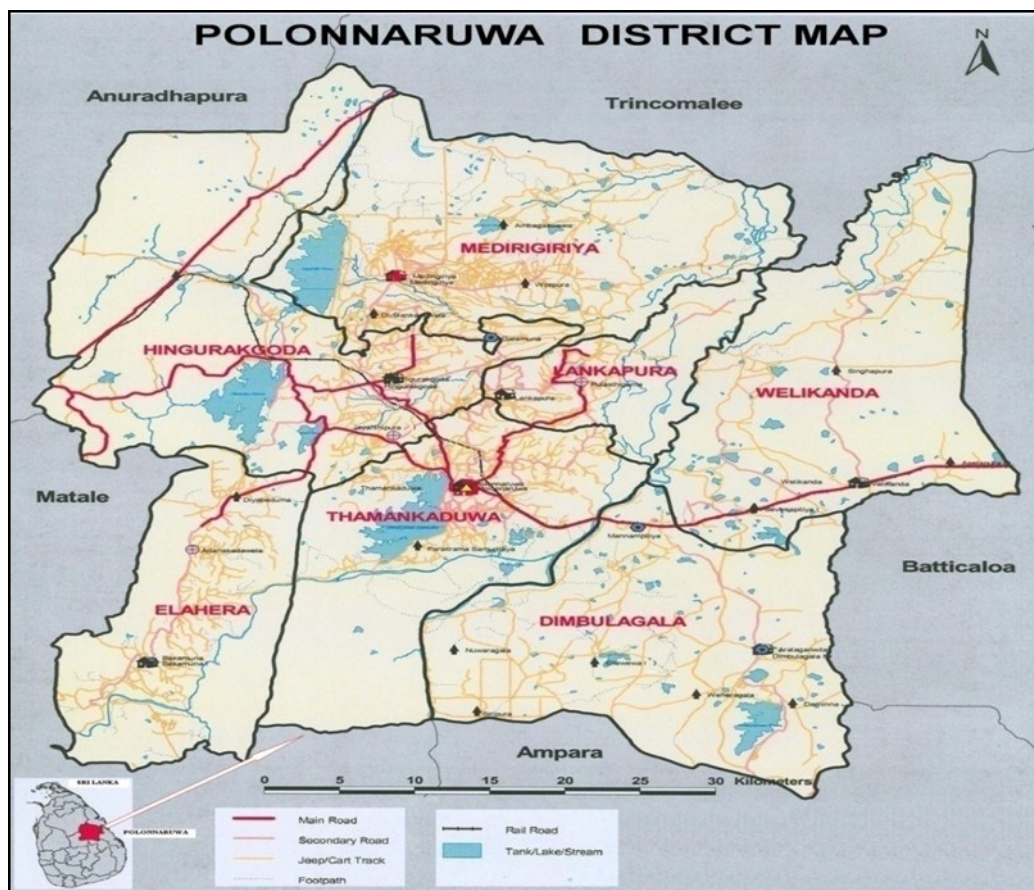
3.7 Seasonal crop cultivation of the District - 2014/15 Maha & 2015 Yala

Crop	Cultivated extent (Hectares)		Yield (MT)	
	2014/15 (Maha)	2015 (Yala)	2014/15 (Maha)	2015 (Yala)
Kurakkan	93.62	26.12	111.6	27.3
Maize	351.01	294.74	968.1	862.8
Green gram	136.8	51.3	219.5	79.9
Cowpea	127.05	36.9	186.6	50.35
Black gram	5.56	1.2	7.22	2
Gingerly	44.49	4.83	31.2	5.75
Peanut	293.76	179.7	639.9	390.21
Manioc	375.27	229.53	5869.05	4061
Sweet potatoes	90.67	105.64	994.65	1306.8
Red onion	12.58	4.72	111.65	46.32
Green chilies	146.28	53.69	838.23	275
Mustard	1.21	0.4	0.45	0.5
Ginger	14.43	12.54	85.7	87.27
Turmeric	9.61	8.72	73.5	68.05
Luffa	83.86	34.8	849.8	382.4
Okra	99.67	54.73	969.7	677.65
Brinjals	137.08	67.76	1619.04	905.27
Bitter-gourd	56.17	23.07	659.82	289.65
Snake gourd	45.95	13.55	401.74	144.92
Tomatoes	51.37	17.08	650.27	186.25
Cucumber	40.93	16.43	407.6	185
Radish	20.31	8.23	225.37	82.75
Beans	23.05	4.72	141.97	65.45
Ash-pumpkin	1.61	1.21	15.5	11
Pumpkin	81.59	67.12	1010.92	1006.1
Ash-plantain	160.15	102.7	1996.61	1400.3
Capsicum	21.81	4.53	109.78	16

3.8 Population Information of the District

Divisional Secretaries Division	Population				Extent (Hectare)	Population Density
	Urban	Rural	Estate	Total		
Thamankaduwa	-	85030	17	85047	46628.6	1.91
Dimbulagala	-	82194	-	82194	58183.5	1.41
Hingurakgoda	-	66333	-	66333	70905.7	0.94
Medirigiriya	-	67660	-	67660	57404	1.18
Welikanda	-	34844	-	34844	57375.2	0.61
Elaheera	-	45311	-	45311	36364.5	1.25
Lankapura	-	37611	-	37611	19776.7	1.9.
Total		418983	17	419,000	346,638.2	1.25

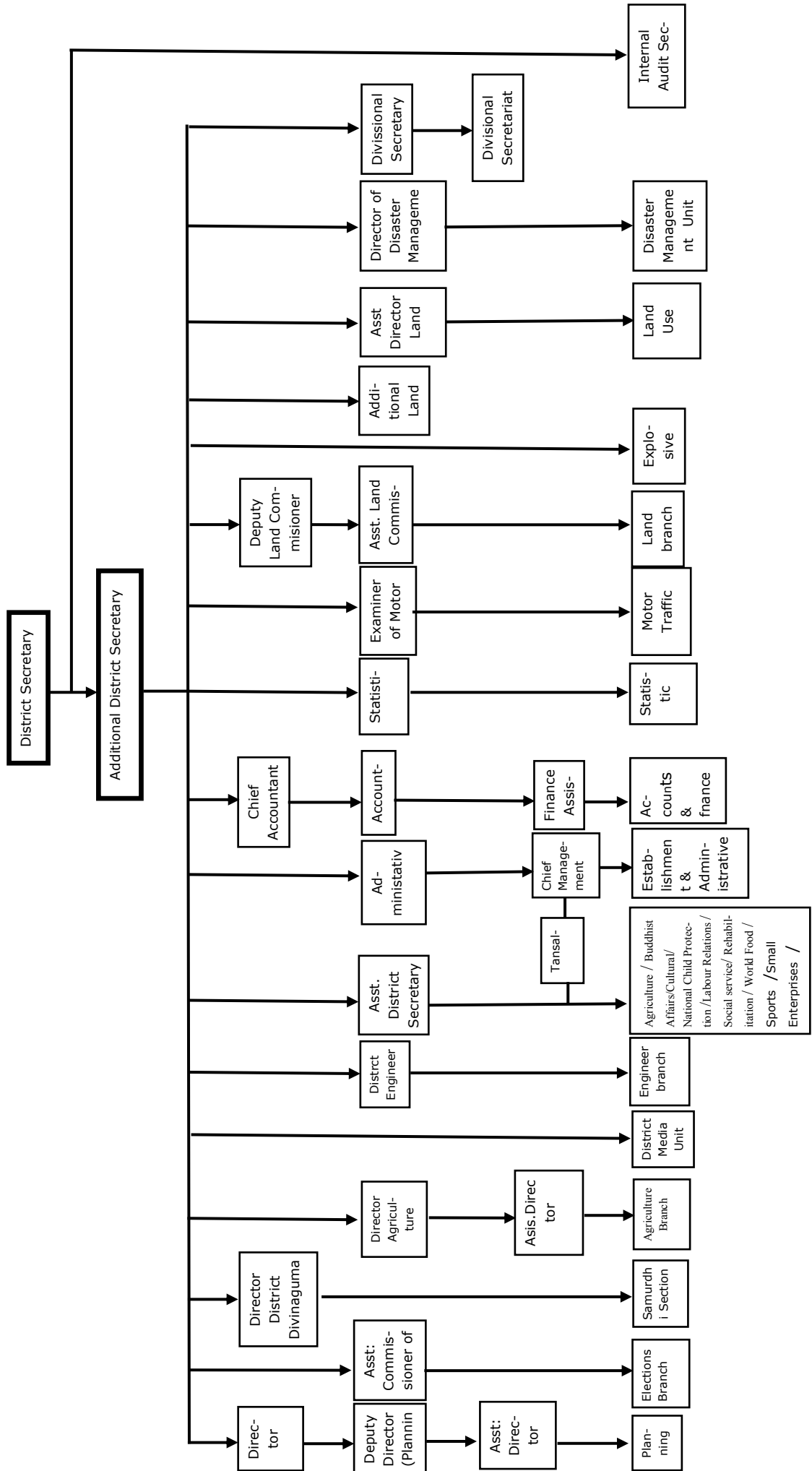
3.9 Irrigation System



Reservoir *	DS Division	Capacity Acre Feet)	Catchment Area (Acres **)	Surface Extent (Acres)
Parakkrama Samudraya	Thamankaduwa	110000	17920	6275
Minneriya	Hingurakgoda	110000	59264	6300
Girithale	Hingurakgoda	18800	6016	775
Rotawewa	Hingurakgoda	1028	4800	N/A
Kauduluwewa	Medirigiriya	104000	22400	6400
Bebiyawewa	Medirigiriya	938	1856	261
Ambagaswewa	Medirigiriya	4000	12512	318
Mahahalmillawewa	Medirigiriya	900	1575	260
Ellewewa	Dimbulagala	1100	330	N/A
Peskulama	Elahera	1750	439	535

* Over 200 acres being cultivated (Large Irrigation) Reservoirs that water is taken for cultivation

4.1 Organizational structure



4.2 CADRE DETAILS

Post	Approved Cadre									Current Cadre									Vacant cadre								
	D.s	Tamankaduwa	Medirigiriya	Hingurakgoda	Elaheera	Lankapura	Dimbulagala	Welikaada	Total	D.S.	Tamankaduwa	Medirigiriya	Hingurakgoda	Elaheera	Lankapura	Dimbulagala	Welikanda	Total	D.S.	Thamankaduwa	Medirigiriya	Hingurakgoda	Elaheera	Lankapura	Dimbulagala	Welikanda	Total
District Secretary	1	-	-	-	-	-	-	1	1	1	-	-	-	-	-	-	-	1	-	-	-	-	-	-	-	-	0
Additional District Secretary	1	-	-	-	-	-	-	1	1	-	-	-	-	-	-	-	-	1	-	-	-	-	-	-	-	-	0
Planning Director	1	-	-	-	-	-	-	1	1	-	-	-	-	-	-	-	-	1	-	-	-	-	-	-	-	-	0
Chief Accountant	1	-	-	-	-	-	-	1	1	-	-	-	-	-	-	-	-	1	-	-	-	-	-	-	-	-	0
Chief Internal Auditor	1	-	-	-	-	-	-	1	1	-	-	-	-	-	-	-	-	1	-	-	-	-	-	-	-	-	0
Assistant District Secretary	1	-	-	-	-	-	-	1	1	-	-	-	-	-	-	-	-	1	-	-	-	-	-	-	-	-	0
Assistant Planning Director	4	1	1	1	1	1	1	11	1	1	1	1	1	1	0	1	1	7	3	-	-	-	1	-	-	-	4
District Engineer	1	-	-	-	-	-	-	1	1	-	-	-	-	-	-	-	-	1	0	-	-	-	-	-	-	-	0
Divisional Secretary	-	1	1	1	1	1	1	7	-	1	0	1	1	1	1	1	1	6	-	-	1	-	-	-	-	-	1
Assistant Divisional Secretary	-	1	1	1	1	1	1	7	-	1	1	1	1	1	-	-	-	5	-	-	-	-	1	-	-	-	2
Accountant 111	1	1	1	1	1	1	1	8	1	1	1	1	1	1	1	1	1	8	-	-	-	-	-	-	-	-	0
Administrative Officer	1	1	1	1	1	1	1	8	1	1	-	1	1	0	1	1	0	5	-	-	1	-	1	0	0	1	3
Administrative Grama Niladari	-	1	1	1	1	1	1	7	-	0	0	1	1	0	1	0	0	2	-	1	1	0	1	0	1	1	5
Additional District Registry	-	1	1	1	1	1	1	7	1	1	1	1	1	1	1	1	0	6	0	0	0	0	0	0	0	1	1
Translator (S/E)	1	-	-	-	-	-	-	1	1	0	0	0	0	0	0	0	0	1	0	0	0	0	0	0	0	0	0
Translator (S/T)	1	1	0	0	0	1	1	5	0	1	0	0	0	0	0	0	0	1	1	-	0	0	0	1	1	1	4
Information & Communication Tec. Officer	2	1	1	1	1	1	1	9	0	0	0	0	0	0	0	0	0	0	2	1	1	1	1	1	1	1	9
Development Officer	31	67	57	65	40	40	68	410	28	42	37	23	31	31	34	29	239	3	25	20	42	9	6	39	27	171	
Technical Officer	2	2	2	2	2	2	2	16	1	1	0	1	1	1	1	1	7	1	1	2	1	1	1	1	1	9	
Draftsman	1	-	-	-	-	-	-	1	1	-	-	-	-	-	-	-	-	1	0	0	0	0	0	0	0	0	
Public Management Service	32	33	32	32	25	25	30	234	32	29	31	31	19	22	22	21	206	0	4	1	1	6	3	9	4	28	
Grama Niladari	-	55	45	53	28	28	56	295	-	53	39	43	23	28	28	46	262	-	2	6	10	5	0	10	0	33	
Information & Communication Tec. Assistant	2	1	1	1	1	1	1	9	0	0	0	0	0	0	0	0	0	0	2	1	1	1	1	1	1	9	
Technical Assistant	2	1	1	1	1	1	1	9	2	1	0	1	1	1	0	1	7	0	0	1	0	0	1	0	0	2	
Driver	8	3	3	3	3	3	3	29	6	2	2	2	2	2	2	2	19	2	1	1	1	1	1	1	1	10	
Electrician	1	-	-	-	-	-	-	1	0	-	-	-	-	-	-	-	0	1	-	-	-	-	-	-	-	1	
Bungalow Keeper Cum - cook	1	-	-	-	-	-	-	1	0	-	-	-	-	-	-	-	0	1	-	-	-	-	-	-	-	1	
K.K.S	15	11	8	8	6	7	9	71	15	7	7	5	5	7	8	6	60	0	4	1	3	1	0	1	1	11	
Total	112	182	157	173	114	116	179	1153	97	142	120	113	87	99	113	79	849	16	40	37	60	27	17	66	41	304	

5. Performance

5.1 Progress of General Administration

5.1.1 Grama Niladhari Activities

- ◆ Working as a peace officer by imposing the powers vested by civil code procedure
- ◆ Imposing the powers vested by various ordinances and regulations and reporting the violations of the same to courts
- ◆ Collection of economical, social and cultural data with required updates and providing the same to the government and other institutes over the instructions of divisional secretary
- ◆ Coordination and implementation of government social, economical and cultural development programmes within the ward
- ◆ Ensuring the social welfare activities in the ward
- ◆ Maintaining the Grama Niladhari official diary as a legal document
- ◆ Keeping up a resourceful Grama Niladhari office in the ward through maintaining a well organized file system, inventory book and other legal documents
- ◆ Except the Grama Niladhari's leave day, 24 hour commitment in all other days for public service (Grama Niladhari's are entitled for one leave day per week)

5.1.2 Internal Audit Activities

Aims of Internal Audit Section

- Participating in the internal finance administration of District Secretariat and divisional secretariats and preventing any fault or fraud being take place and having inquires on methodologies apply to disclose such fault or fraud.
- Authenticating the progress of development programmes and projects that are implemented by district secretariat and divisional secretariats

Activities of the Internal Audit Section

- Prevention of faults and frauds and verifying the availability of methodologies to find out such frauds and faults
- Verifying the trustworthiness of account reports
- Verifying the performance of office staff
- Verifying the availability of adequate security for the assets of district and divisional secretariats
- Finding out whether the office activities are carried out as per the provisions of the establishment code, financial regulation and instructions given by ministries and the treasury
- Identification of waste and excessive expenses and verifying efforts internally used to find out such faults
- Feedback and report of the physical progress and conformity with the expected target of development programmes
- Feedback and report of activities carried out through budget allocations and other administrative proceedings
- Coordination of district audit management committee

Progress of Internal Audit as at 31.12.2016

Audited Institute	01 st Quarter	03 rd Quarter	03 කාර්තුව	04 කාර්තුව
District Secretariat	√	-	-	-
Divisional Secretariats				
Medirigiriya	√	√	√	√
Lankapura	√	√	√	√
Elahera	√	√	√	√
Hingurakgoda	√	√	√	√
Thamankaduwa	√	√	√	√
Dimbulagala	√	√	√	√
Welikanda	√	√	√	√

Conducting Auditing Management Committees

- ◆ Conducting Auditing Management Committee relevant for 04th quarter 2015 -29.04.2016
- ◆ Conducting Auditing Management Committee relevant for 01st and 02nd quarters 2016 -04.10.2016
- ◆ Conducting Auditing Management Committee relevant for 03rd quarter 2016 -26.12.2016

5.1.3. Investigation Branch of District Secretariat

Procedure of a Basic Investigation

Complains made against the government officers, Land issues and other civil issues by general public, president office, prime minister's office, ombudsman office, mediation board commission and other government institutes including ministry of home affairs to the district secretary are basically investigated by this section under the endorsement of district secretary and accordingly a report will be forwarded to district secretary or any other officer authorized by him. Further action will be taken over the recommendations of such officer.

Summary of the Action taken to solve and Minimize the problems during 2016

Divisional Secretariat	Issues against government officers and other administrative issues	Land and other Civil issues
Medirigiriya	07	15
Dimbulagala	07	21
Lankapura	02	25
Thamankaduwa	07	16
Hingurakgoda	04	30
Elahera	03	18
Welikanda	03	11
Total	33	136

5.1.4. Consumers Affairs Authority

Market Raids

Section	Raids	Fine
10	395	1,843,000.00
11	38	14,000.00
12	44	15,000.00
15	-	6,000.00
16	-	-
17	01	-
20	115	395,500.00
26	62	193,000.00
30	-	-
31	-	-
30,31	222	1,065,500.00
Total		3,532,000.00

Consumers Education & Empowering

Task	Quantity
Establishment of Consumers Organizations	01
Consumers Education Programmes (School/Consumer)	17
Awareness for Merchants	17
Awareness through Media	05

Consumers Relief Services (Only Written Complains)

Task	Quantity
Complains Received	16
Complains directed to the Head Office	08
Complains concluded with relief	07
Complains concluded without relief	02
Remaining	07

5.1.5. District Engineer's Office

Aims of District Engineer's Section

Contribute to build a prosperous Sri Lanka through completing all the development projects in Polonnaruwa at an optimum level

Role

Making the district opulent by developing physically, economically and socially through completing all the development projects implemented by engineering section at an optimum level

S.N	Programme	Project		Allocated Amount (Million Ru-	Financial Progress (Million Rupees)
		Approved	Completed		
1	"Pibidemu Polonnaruwa Development Pro-	10	03	317.80	226.21
2.	Other Projects	34	33	571.99	387.89

5.1.6 Census & Statistics Section

Aim & Role

Contributing to the national development through collecting, processing and publishing accurate and updated information required in evaluating socio economical values and policy planning and implementation

Serial No:	Activity	Date of Completion	අදාළ දිනයට ප්‍රගතිය
1.	Collections of Agriculture Statistics of crops(2015/16Maha & 2016 Yala)	Within the season	100%
2.	Paddy harvest estimating survey -2015/16 Maha -2016 Yala	15 th May 15 th October	80%
3.	Preparation of highland agricultural statistics reports		100%
4.	Preparation of Livestock Statistics reports	15 th August	100%
5.	Annual Survey of industries, trade & service-2016	Annually	100%
6.	Census of Government and semi government employees	After 10 years	100%
7.	Quarterly industries survey	Once a quarter	100%
8.	Report of Slaughters	15 th March	100%
9.	Survey of Labour force in Sri -Lanka.	Monthly	100%
10.	Report of Local Government Statistics	28 th February	100%
11.	Inland production price and urban price collecting reports	Weekly/Monthly	100%
12.	Survey of house hold income and Expenditure	From Jan: Dec: 2016	100%
13.	Survey on big onion cultivation	Yala Season	100%
14.	Preparation of statistic hand book & Collection of data	Annually	100%
15.	Labour force survey coding of income & expenditure schedules and computerizing data.	Monthly	100%

5.1.7. District Agriculture Director's Office

Aims of the Agricultural Section

Supporting in improving the country's economy with uplifting the economic status of farming community through directing and practicing them for a high quality agricultural system by providing appropriate remedial measures for the agricultural issues in Polonnaruwa district.

Role of the Agricultural Section

- Improving the agricultural productivity
- Developing the agro products
- Introducing modern technology for the agriculture sector (Eg: Tissue Culture Technology, introducing modern machinery for cattle farming. {Milking machines, grass mincing machines})
- Providing equipment over the necessity of farmers with 50% contribution (Milking machines, Power Spray Machines, Grass Cutting Machines, Grass mincing machines etc)
- Popularizing the agriculture knowledge
- Directing farmers for self employment through agriculture training programmes and uplifting their economic status accordingly
- Increasing the participation of youth for agriculture (Eg: Youth Agro Entrepreneur Programme, Implementation of commercial farm programme)
- Implementation of projects related to agriculture Eg: Traditional Seeds paddy, Additional crop seeds, providing (Green Gram, Cawpe, Black Gram, Chilies) and underutilized crop plants like Spiny Gourd free of charge. Fruit village programme (Providing plants free of charge)
- Improving the participation of farmers for agriculture (Directing farmers to agriculture through 50% contribution scheme)
- Enhancing the agricultural knowledge of the people who engage in agriculture (Eg: Field visits, field surveys, directing for agricultural programmes.
- Acknowledging farmer community on agriculture Eg: Through hand bills, conducting agriculture exhibitions.

Food producing national programme – 2016-2018

Funds granted

* Cultivating traditional local paddy and additional crops 2016 Yala	-	5.562 million rupees
* To implement Chili Project	-	2.607 million rupees
* Cultivating traditional local paddy and additional crops 2016/17 Maha	-	0.885 million rupees
* To expend on purchasing traditional seeds paddy	-	0.35315 million rupees
* Spiny Gourd cultivation	-	1.125 million rupees

No:	Project	Financial Progress			Physical Progress
		Allocated Amount (Million Rupees)	Expenditure (Million Rupees)	Balance (Million Rupees)	
01	2016 Yala Traditional Paddy / Additional Crop Cultivation	5.562	4.228	1.334	Paddy Kilos 27230 - Beneficiaries - 960 Maize 1000 kilos, Kawpe 2100 Kilos Gingerly 250 Kilos, Green Gram 300 Kilos Black Gram 500 kilos Big Onion mother bulbs 7660 Kilos Beneficiaries -255
02	Chili Cultivation Programme	2.607	1.919	0.688032	393.5 Kilos Beneficiaries -1954
03	2016 Maha Traditional Local Paddy	0.885	0.885	-	12000 Kilos Beneficiaries - 400
04	Traditional Seeds Paddy	0.35315	-	0.35315	-
05	Spiny Gourd Cultivation	1.125	1.125	-	15000 Plants Beneficiaries -532
06	Fruit Village Programme	0.25	242549.04	7450.96	Mango Plants 1000, Wood Apple 3000 Orange 3000- Beneficiaries 77 Tangerine 1000- Beneficiaries 09
07	Best Farmer Competition	0.0197	0.0197	-	Selecting best six farmers Commercial Farmers -06 Gardening Farmers -03
08	Agro Well Project	0.25	0.10	0.15 To be received (after producing bills)	Work of one agro well has started

Performance and Achievements during year 2016

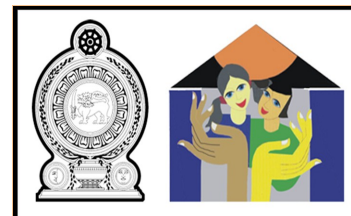
Serial No:	Activities /Programmes Performed	Achievements
01	Spiny Gourd cultivation promotion programme (Providing 15000 spiny gourd plants free of charge)	Providing 15000 plants free of charge (100%)
02	Big Onion true bulb production programme (Providing 10000 mother bulbs free of charge)	Providing 7660 bulbs free of charge
03	Providing 13kgs big onion bulbs free of charge	Providing 13kgs big onion bulbs free of charge
04	Traditional Seeds paddy providing programme (2016 Yala)	Providing 27230 kilos of seeds free of charge
05	Additional crop cultivation programme (2016 Yala)	Kawpe. 400 Kilos, Maize 1000 Kilos Kawpe 2100 Kilos, Gingerly 250 Kilos Green Gram. 300 Kilos, Black Gram 500 Kilos
06	Best Farmer Competition	03 Commercial Farmers, 03 Gardening Farmers
07	Traditional Seeds paddy providing programme (2016/17 Maha Season)	Providing 12000 traditional paddy kilos free of charge
08	Chili cultivation programme in 5000 acres	Providing 393.5 seeds kilos free of charge
09	Fruit village programme	Mango 1000 plants Wood Apple 3000 Plants Orange 3000 plants Tangerine 1000 plants Issued free of charge
10	Agro well programme	Work of one agro well has started. A sum of Rs: 250,000/= is granted for each well.

5.1.8 National Child Protection Authority

Aim & Role:

Prevention of child Abuse and providing protection & treatments for such victims

Estimate & Details of Expenditure

**Funds received to district secretariat**

Programme	Date	Location	Beneficiaries	Fund Received	Expenditure	Balance
Inter School Debate Competition on Child Protection	16.06.11	Pl/Thopawewa Maha Vidyalaya	75	36460.00	27716.50	8743.50
Providing Resource Person Allowance SCPC of department of education	16.06.06 16.06.07 16.06.09 16.06.10 16.06.14 16.06.24	Welikanda Lankapura Medirigiriya Hingurakgoda Dimbulagala Thamankaduwa		7000.00	6000.00	1000.00
Progress Review	16.11.11 16.12.08	District Secretariat	08	16200.00	3600.00	12600.00
Awareness programme for teacher students of college of education	16.10.15	Pulathisi college of education	303	58000.00	57917.75	82.25
Establishing and strengthening of SCPC	16.11.24 16.11.29 16.12.01	Nagalakanda M.V Thopawewa M.V Irahandaketuwewa M.V	37 30 31	15000.00	8200.00	6800.00
Awareness for civil community	16.12.16	Lankapura Pre: school Wijaya pre: school	63	5000.00	5040.00	-
Total			547	137660.00	108474.25	29225.75

programmes conducted without Funds

Programme	Elahera	Welikanda	Dimbulagala	Lankapura	Thamankaduwa	Hingurakgoda	Medirigiriya	Total
1929 complaint Investigation	12	25	36	26	38	21	26	184
Parents Skill development programmes	02	06	05	04	04	03	04	28
Programmes with MOH	0	24	08	05	23	10	09	62
Establishment of school children protection committees ,Feedback pro-	20	30	46	56	18	26	31	242
Child protection Village programme	14	31	19	12	28	14	13	145
Awareness programmes	12	64	20	41	36	12	14	210

Funds received by divisional secretariats

Programme	Division	Fund Received	Expenditure	Beneficiaries
Skill development programme for the members of school child protection committees and feed back	Dimbulagala	35000.00	32354.00	60
	Thamankaduwa	35000.00	35000.00	60
	Welikanda	35000.00	31000.00	40
	Lankapura	35000.00	32600.00	60
	Medirigiriya	35000.00	29640.00	47
	Hingurakgoda	35000.00	35000.00	60
Awareness programme for community programmes implementing officers to enhance the child protection at rural level	Dimbulagala	15000.00	14175.00	47
	Thamankaduwa	15000.00	15000.00	45
	Welikanda	15000.00	15000.00	40
	Lankapura	15000.00	15000.00	40
	Medirigiriya	15000.00	15000.00	40
	Hingurakgoda	15000.00	15000.00	40
Whole island community awareness programme for community to enhance the child protection at rural level	Dimbulagala	15000.00	14700.00	150
	Thamankaduwa	15000.00	15000.00	150
	Welikanda	15000.00	-	-
	Lankapura	15000.00	15000.00	159
	Medirigiriya	15000.00	15000.00	167
	Hingurakgoda	15000.00	12000.00	120
Skill development programme for the members of school child protection committees	Dimbulagala	23600.00	23600.00	30
	Thamankaduwa	23600.00	23600.00	30
	Welikanda	23600.00	23600.00	30
	Lankapura	23600.00	23600.00	39
	Medirigiriya	23600.00	23000.00	30
	Hingurakgoda	23600.00	-	-
Awareness programme for community programmes implementing officers to enhance the child protection at rural level	Dimbulagala	5000.00	4150.00	42
	Thamankaduwa	5000.00	5000.00	45
	Welikanda	5000.00	5000.00	40
	Lankapura	5000.00	5000.00	40
	Medirigiriya	5000.00	5000.00	40
	Hingurakgoda	5000.00	5000.00	40
Establishing and strengthening of school child protection committees	Dimbulagala	5000.00	5000.00	60
	Thamankaduwa	5000.00	5000.00	60
	Welikanda	5000.00	5000.00	60
	Lankapura	5000.00	5000.00	60
	Medirigiriya	5000.00	5000.00	70
	Hingurakgoda	5000.00	5000.00	60
Total		588000.00	533619.00	2101

Awareness for Samurdhi Beneficiaries



Awareness for Civil Communities



Awareness for medical professionals Medirigiriya



Awareness for Divineguma Dos



Awareness for College of education students
Pulathisipura College of education



Programmes with school child protection committee



5.1.9 District Disaster Management Unit- Polonnaruwa

According to the disaster Management policy

Vision: A Sri Lanka free from disasters

Aim: Protect people, property and environment from disasters

Summary of the programmes implemented by preparedness section of our unit in 2016

Quarter	Number of Programmes	Received Amount	Expenditure (Rs)	Balance (Rs)
Quarter I	04	42,000	42,000	-
Quarter II	06	53,000	53,000	-
Quarter III	13	133,000	116,000	17,000 (Returned)
Quarter IV	08	64,000	64,000	-
Total	31	292,000	275,000	17,000

Preparedness programmes implemented by District Disaster Management Unit – 2016



Summary of the programmes conducted by awareness and training section – 2016

Quarter	Number of Programmes	Received Amount	Expenditure (Rs)	Balance (Rs)
Quarter I	06	120,000	115,000	4,450 (returned)
Quarter II	05	85,000	85,000	-
Quarter III	02	50,000	50,000	-
Quarter IV	02	35,000	35,000	-
Total	15	290,000	285,000	-

Awareness and Training programmes Implemented by District Disaster Management Unit

Other Programmes implemented by District Disaster Management Unit

Serial No:	Implemented programme	No: of Programmes
01	Awareness & Training programmes implemented in Army camps on emergency disasters	17
02	Taking action on sudden fires in Polonnaruwa district	15

Progress as at 30.11.2016 of the programmes implemented by District Disaster Management unit in 2015

Serial No:	Name of the Project	Estimated Amount	Expected time to complete the project	Implementing Agency	Physical progress as at 30.11.2016	Beneficiaries
01	Dredging sand & soil of the paddy lands that were destroyed due to flood and soil filling repair of canals and filling broken areas	15,532,400	2016.12.15	Respective divisional secretariat	100%	Nearly 2000-3000 families
02	Renovation of Abanganga	54,397,000	2016.12.15	Irrigation office	100%	Nearly 2500-3000 families
03	Renovation of Kaudulla Spill canal	4.9 millions	2016.12.15		100%	Nearly 650 farmer families
04	Construction of a bridge in 150 ward of Lankapura	1,220,352.38	2016.12.15	Divisional Secretariat – Lankapura	100%	560 families
05	Renovation of Divulankadawala Tank	1,500,000	2016.12.15	Department of Agrarian Services	100%	85 families
06	Renovation of Kumbukgete anicut	2,000,000	2016.12.15		100%	80 families
07	Renovation of Aluthwewa tank	2,000,000	2016.12.15		100%	75 families
08	Renovation of Palugaswewa Tank	1,800,000	2016.12.15		100%	82 families
09	Renovation of Siyambalagaswewa Anicut	1,800,000	2016.12.15		100%	60 families
10	Renovation of Athdathwalayaya Anicut	1,800,000	2016.12.15		100%	76 families
11	Renovation of Nelumwewa Anicut	2,000,000	2016.12.15		100%	82 families
12	Renovation of Rotawewa tank	2,000,000	2016.12.15		100%	75 families
13	Renovation of Ambaleliwewa /Tank at Hathareskokuwa Junction	2,000,000	2016.12.15		100%	85 families
14	Renovation of Halmillawewa Tank	2,000,000	2016.12.15		Department of Agrarian Services	100%
15	Renovation of Paluwewa Tank	2,000,000	2016.12.15	100%		45 families
16	Renovation of Diyabeduma Tank	2,000,000	2016.12.15	100%		75 families
	Total	98,949,752.38	-	-	-	-

Serial No	Name of the Project	Estimated Amount	Expected time to complete the project	Implementing Agency	Physical progress as at 30.11.2016	Beneficiaries
1	Construction of Athhondawela wewa bridge of Wadigawewa ,Medirigiriya	1,483,948.72	2016.12.15	Divisional secretariat Medirigiriya	100%	275 families
2	Establishment of bridge doors and dams to control flood/ Menike Ela	1,971,868.64 1,378,312.96	2016.12.15	Divisional secretariat Dimbulagala	100%	245 families
3	Preparation of Mala Oya security dam system	6,231,000.00 1,672,800.00	2016.12.15	Irrigation office	100%	500 families
4	Spill canal of Minneriya reservoir	2,095,620.00			100%	400 families
5	Minimization of rural flood of Nagasthenna, Mahindagama	1,004,716.62	2016.12.15	Divisional secretariat Welikanda	100%	40 families
6	Construction of the bridge crossing the waste water canal at main road near Bebiyawa temple	3,241,859.85	2016.12.15	District Engineering Section	100%	265 families
7	Replacing the old culvert at Kahambiliyawa	3,516,137.28	2016.12.15		100%	650
8	Controlling the flood around the area of Boraluwa in Galoya of Minneriya Hathareskotuwa road	1,011,872.00	2016.12.15	Divisional Secretariat Hingurakgoda	100%	434 families
9	Flood controlling project of Bogahadamana , Girithale Janapadaya (Colony)	1,991,582.87	2016.12.15		100%	50 families
10	Construction of Aluthwewa bridge (New town , government quarters , 01 st Lane	1,980,000.00	2016.12.15	Divisional Secretariat Thamankaduwa	100%	110 families
11	Construction of flood controlling dam Kotalleeya	1,857,556.61	2016.12.15		Halted.	175 families
12	Construction of side wall near Thambala al madeena primary school	1,886,896.57	2016.12.15		100%	250 families
13	Construction of box culvert at the water way near al madeena primary school. (Drainage water way - Part 1)	723,350.27	2016.12.15	Divisional Secretariat Lankapura	100%	150 families
14	Construction of second box culvert at the water way near al madeena primary school. (Drainage water way - Part 11)	723,350.27	2016.12.15		100%	175 families
15	Renovation of said drainage way 02	693,076.06	2016.12.15		100%	190 families
	Total	33,463,948.72	-	-	-	-

Drainage water way renovation programme implemented under Pibidemu Polonnaruwa district development programme of Rajarata Navodaya president programme – 2016

Serial No:	Divisional Secretaries Division	No: of drainage water ways renovated	Gross Estimate (Rs:)
01	Thamankaduwa	17	6,600,000.00
02	Elahera	08	3,100,000.00
03	Dimbulagala	30	8,021,000.00
04	Medirigiriya	10	11,900,000.00
05	Hingurakgoda	14	4,800,000.00
06	Lankapura	10	6,000,000.00
07	Welikanda	17	8,350,000.00
	Total	107	48,771,606.00

5.1.10 Department of Divineguma Development

Livelihood Development Programme – Polonnaruwa District -2016

Physical & Financial Progress as at 21.12.2016

Programme	Funds granted (Rs :)	Number of pro- jects implemented	Number of pro- jects completed	Project expendi- ture	Progress
Green vegetables &	512,400.00	6774	6774	504,471.05	98%
Main livelihood	9,488,000.00	939	939	9,006,168.76	95%
Estate infrastructure	-	-	-	-	-
Model villages	18,550,000.00	871	871	18,262,051.00	98%
Special projects	2,450,000.00	40	40	2,413,250.00	98%
Total	31,000,400.00	8624	8624	30,185,940.81	97%

Polonnaruwa District Divineguma community based bank programme – 31.12.2016

Divineguma community based bank membership	91,127
Divineguma community based bank societies	7
Divineguma community based bank	22
Divineguma community based organizations	713
Small groups	13,154

Deposit Progress

Number of accounts	314,910
Amount	.1620 million rupees

Loan issuing progress

No: of loans issued	629,820
Amount of loan issued	1296 million rupees

Diriya Liyata Saviyak Housing programme

Houses constructed	38
Expenditure	Rs. 5,600,000.00

Staff Training programmes	Rs: 160,951.00
---------------------------	----------------

5.1.11 Motor Traffic District Office – Polonnaruwa**Aim & Role**

Committing to excellent motor traffic regulation and producing super drivers in Polonnaruwa district. Through executing modern technology and other rules and regulations in an optimum level for higher public appreciation and achieving the same.

Performance and achievements in year 2016

Serial No:	Description	Total
1.	Written Test	18698
2.	Practical Test	13102
3.	No: of temporary licenses	15280
4.	No: rejected	451
5.	Motor cycle registration	04
6.	Issuing number plates	3938
7.	Issuing Heavy certificates	388
8.	Accident inspections	849
9.	Transferring the ownership of motor cycles	53
10.	Issuing of identity certificates	109
11.	Prohibition orders	77
Total		39,053,450.00

Progress of the mobile service conducted in July 2016

Divisional Secretariat	Medirigiriya	Elahera	Hingurakgoda	Welikanda	Dimbulagala	Lankapura	Thamankaduwa		Total
	01/02	07	08/09	12	16	17	22/23	30	
Date	01/02	07	08/09	12	16	17	22/23	30	
Applications for new driving licenses	263	161	531	146	241	316	1061	113	2719
Passed	115	117	393	84	175	228	641	-	1753
Issued training permits	115	117	393	84	175	228	641	-	1753
Failed	136	36	109	48	56	72	420	-	877
Extension of Driving Licenses	12	8	29	14	10	16	95	11	195
Renewal of Driving Licenses	46	40	103	49	48	47	59	57	449
Issue of heavy certificates	7	0	11	5	8	2	19	01	53
Issue of identity certificates	4	0	11	2	6	6	17	1	47
Medical reports	352	352	601	284	344	397	437	183	2950

5.1.12 Buddhist Affairs Section

Vision:

Providing excellent contribution from Polonnaruwa district to the endeavor of improving, promoting and ensuring the stableness of Buddha sasana and enhancing the Daham School education and through the establishment of Wewai Dagebai (Reservoir and Stupa) concept developing the temples of Polonnaruwa district

Special programmes conducted in 2016

Pirith Chanting conducted symbolizing the arrival of New Year 2016 (01.01.2016)

Proceedings took place in front of the Buddhist shrine of district secretariat under the patronage of district secretary with the participation of all the staff in order to enhance the mentality of the staff and making the upcoming years success.



All Island district students' skills and award presentation ceremony and certificate awarding ceremony of Daham Sarasavi Diploma

Conducting district contests for the students who got through in Divisional Sasanarakshaka mandala student skills competition in 2016 and awarding prizes and certificates for the winners



Conducting the Final Certificate Examination of “Pali” course conducted in 2015

Date: 13.02.2016

Venue: Jayanthi Viharaya , Kaduruwela

Aim:

To evaluate the knowledge of the students who followed the course for a period of one year at Jayanthi Viharaya ,Kaduruwela on 13.02.2016 under the patronage of Ven. Kaduruwela Dhammapala thero , registrar of Kaduruwela sasanarakshaka Balamanadala together with the participation of officers of district secretariat including administrative officer



District “Bethi Gee” (Buddhist Carol) programme conducted parallel to 2520 A.D. State Vesak Festival

Conducted at Jayanthi Viharaya ,Kaduruwela on 27.03.2016 under the patronage of district secretary and other officers with the participation of Ven. Kaduruwela Dhammapala thero , registrar of Kaduruwela sasanarakshaka Balamanadala to select a competent Daham school team to contest at all island “Bethi Gee” competition to be held parallel to 2520 A.D. State Vesak Festival

Programme: Conducting Rain Pirith Chanting

Venue: Near God Ghana statue at Parakkrama Samudraya dam

Aim: Getting a consolation through Rain Pirith Chanting for the environment as well as the people who are severely stricken by the drought prevailing all over the district.



5.1.13. Elections Branch

In terms of the voters register 2016 number of voters in Polonnaruwa district as per the divisions are as follows.

“a” Minneriya	-	86247
“b” Medirigiriya	-	80,087
“c” Polonnaruwa	-	152,071

5.1.14 Land Use Policy Planning Section

It has been informed that following duties are discharged by the department in terms of the gazette extra ordinary No: 4/21 of Democratic Socialist Republic of Sri Lanka in establishing Land Use Policy Planning Department.

- ◆ Preparation of legal background to implement the National Land Use Policy passed for Sri Lanka
- ◆ Preparation of National Land Use Plan
- ◆ Providing appropriate technical guidelines to utilize the limited land resources for the betterment of humans and so as to protect the environmental balance
- ◆ Issue of relevant recommendations and regulations to act upon the future stability of land resources in the development plans based on land resources
- ◆ Implementation of programmes to broaden the knowledge, training and study on scientific land use planning

Duties performed in year 2016 and expenditure report

Activities	Annual Target	Allocated Amount (Rs:)	Achieving the Target (Physical Pro-	Financial Progress
National Land Use Planning Map Survey	119	125,500.00	100%	117,110.00
Special studying project	01	20,000.00	100%	20,000.00
Conducting awareness programmes on Land Use Planning	07	21,000.00	100%	20860.00
Recommendation programmes of divisional	07	315,000.00	100%	314,325.00
Rural Land Use Planning model programmes	02	100,000.00	100%	100,000.00
Preservation programme for water sources and catchment areas	01	40,000.00	100%	39,500.00
Rehabilitation programme for degraded lands	01	50,000.00	100%	50,000.00
“Punarudaya” (Renaissance) environmental	06	750,000.00	100%	746,500.00
District Land Use Planning Committee	02	6,000.00	100%	4187.00
Divisional Land Use Planning Committee	07	10,500.00	100%	10,500.00
Total		1,438,000.00		1,422,982.00

5.1.15. Women’s Affairs & Development Section

Financial Support : Sri Lanka Women’s Bureau						
Serial No:	Name of the Programme	Divisional Secretariat	Annual Budget Provisions (Rs :)	Date Conducted the programme	Actual Expenditure (Rs :)	No: of Beneficiaries
01	Livestock Programme	Dimbulagala	167,000.00	2016.03.29	167,000.00	10
02	Income Generating systems (Trainings & Projects)	Thamankaduwa	28,000.00	2016.06.16	28,000.00	50
		Hingurakgoda	28,000.00	2016.07.04	28,000.00	45
03	Mushrooms Technical Training Programme	Lankapura	50,000.00	2016.04.29	50,000.00	10
04	“Diriya Dethata Saviya” fisheries programme	Thamankaduwa	12,500.00	2016.05.12	12,500.00	40
				125,000.00	2016.10.25	125,000.00
05	Awareness on counseling	Hingurakgoda	30,000.00	2016.05.06	30,000.00	100
						2016.05.24
06	Programmes parallel to women’s day	Thamankaduwa	15,000.00	2016.04.06	15,000.00	30
		Welikanda	25,000.00	2016.04.06	25,000.00	100
		Lankapura	10,000.00	2016.04.05	10,000.00	116
		Medirigiriya	20,000.00	2016.04.25	19,630.00	25
07	Providing self employment aid for widows and female heads of house hold	Elahera	600,000.00	2016.12.31	600,000.00	20
08	Awareness on prevention of gender based violence	District Secretariat	25,000.00	2016.10.05	25,000.00	100
				25,000.00	2016.07.07	23,900.00
09	Awareness programme on life skill development and reproductive health for young girls	Welikanda	20,000.00	2016.11.04	20,000.00	180
		Thamankaduwa	20,000.00	2016.09.22	20,000.00	200
		Dimbulagala	20,000.00	2016.07.26	19,300.00	200
		Medirigiriya	20,000.00	2016.06.30	20,000.00	200
10	Nutrition Programme	Hingurakgoda	25,950.00	2016.08.30	25,950.00	80
11	District Women’s Associations Strengthening pro-	District Secretariat	15,000.00	2016.06.24	15,000.00	50
				15,000.00	2016.07.22	15,000.00
12	Providing Rs. 25000.00 each for the women who are going abroad to empower here in this country	Lankapura	125,000.00	2016.07.30	125,000.00	05
13	Exhibition of women’s products	District Secretariat	50,000.00	2016.07.30	50,000.00	62

Financial Contribution – National Women’s Committee

Serial No:	Name of the Programme	Divisional Secretariat	Annual Budget Provisions (Rs :)	Date Conducted the programme	Actual Expenditure (Rs :)	No: of Beneficiaries
01	Preparation of Plaques	District Secretariat	50,000.00	2016.02.07	50,000.00	
02	Establishment of model villages assisting and friendly for women	Perakumyaya (Welikanda)	8,935.00	2016.02.08	8,935.00	80
03	Awareness on family counseling	Welikanda	22,500.00	2016.06.14	22,500.00	100
04	Computer training for the officers attached to the ministry	District Secretariat	41,420.00	2016.04.21	41,420.00	37
05	Monthly Progress review meeting	District Secretariat	3,000.00		3,000.00	
06	Income generating motivation programme for women	Welikanda	28,000.00	2016.11.09	28,000.00	50
07	Providing project aid for widows and female heads of house holds	Welikanda	300,000.00	2016.07.30	150,000.00	05
08	Life skill programme for girls	Welikanda	20,000.00	2016.11.30	20,000.00	185
09	Strengthening women’s performance organizations	Welikanda	15,000.00	2016.11.11	15,000.00	50
10	Awareness and practical training for ‘Nutrition for Good Life’ programme	Welikanda	30,000.00	2016.12.05	30,000.00	73
11	Mushroom project	Welikanda	30,000.00	2016.11.18	5,000.00	17
12	Productivity programme	Welikanda	10,500.00	2016.12.31	10,500.00	280

Programmes conducted over the funds of the Ministry**Financial Contribution – National Women’s Committee**

Serial No:	Name of the Programme	Divisional Secretariat	Annual Budget Provisions (Rs :)	Date Conducted the programme	Actual Expenditure (Rs :)	No: of Beneficiaries
01	Awareness on prevention of	District Secretariat	25,000.00	2016.10.05	25,000.00	100
02	District Women’s Associations Strengthening programme	District Secretariat	15,000.00	2016.06.24	15,000.00	50
03	Women’s production exhibition fair	District Secretariat	50,000.00	2016.07.30	50,000.00	62

Other Programmes - National Women's Committee

Serial No:	Name of the Programme	Venue	Resource Persons	No: of Beneficiaries
01	District Women's Associations New Year Festival	District Secretariat	Political Authority	95
02	Conduct of programmes parallel to girls day	Kadawalawewa School	District Health Office	140
03	Showing "Diyaniya" documentary film	Royal College, Polonnaruwa	Child Rights Promotion Officer	600
04	Conducting volley Ball and cricket tournament parallel to women's day	Dimbulagala	Womens Development, Relief Sister	10 Teams
05	"Sumithuru" Bag manufacturing programme	Thamankaduwa	Sri Lanka Women's Bureau	10
06	Awareness to minimize the women's being tormented	Thamankaduwa	Children & Women's Police unit	38
07	Bite Manufacturing workshop	Thamankaduwa	Vidatha Resources Center	38
08	Handicraft manufacturing training programme	Lankapura	JAICA	34
09	International Women's day programme	Lankapura	Divisional Secretary	109
10	Women's productions fair	Lankapura	Women's Development	53
11	Awareness for members of Women's Associations counseling	Hingurakgoda	Counseling officer	62
12	Parents worshiping & elders respect programme	Hingurakgoda	Gramaniladhari Relief Sister	33
13	Health & Nutrition Programmes	Thamankaduwa	Medical Officer of Health	101
14	Accounts Training Programme	Medirigiriya	Ministry of Mahaweli Development & Environment	50
15	Three Productivity Awareness programmes	Elahera	Productivity Officer	156
16	Two Programmes on child protection	Elahera	Child Protection Officer	97
17	International women's day programme	Elahera	Women's Development	100
18	Leadership Training	Hingurakgoda	Development Officer	20
19	Experience exchanging programme (Mahaweli Climate Change Resilience Project)	Medirigiriya	Divisional Women's Associations	50
20	Awareness for women on social integration	Lankapura	Social Integration Officer	62

5.1.16 District Planning Secretariat

Aim - Contribute to create a new Sri Lanka through transforming all the villages in Polonnaruwa district as renaissance and prosperous villages

Role -Uplifting the living status of rural communities by ensuring a complete development physically, economically and environmentally in rural sector through assuring decision making ability on villages' development of the district through community empowering

Performance, achievements and expenditure information – 2016

Serial No:	Programme	Projects		Allocated Amount (Million rupees)	Financial progress	
		Approved	Completed			
1	“Pibidemu Polonnaruwa” development project	854	582	8136.00	6156.14	
2	Rural Economic Infrastructure Development	466	466	295.00	292.49	
3	Decentralized budget programme	741	741	77.23	76.59	
4	Threaten villages development programme	Housing programme	240	240	192	191.33
		Drinking water programme	28	28	14.63	14.61
5	Rural economic promotion programme	55	53	29.10	28.16	
6	Rural infrastructure special programme	6	6	10.00	10.00	

5.1.17 Deputy Land Commissioner’s Office

Mission

Maintaining an appropriate management which support the utilization of state lands competently while assuring the sustainable development with proper coordination of all the sectors and protecting the environmental stability

Vision

To a Sri Lanka getting optimum harvest out of the land resource and eliminating poverty while securing the rights of future generation

Progress as at 31st December 2016

Serial No:	Programme	Annual Target	Progress of the previous month	Progress as at 31 st December
1	Issuing permits , Land Development Ordinance	400	285	686
2	Issuing Long Term Permits	300	21	143
3	Grants	280	80	132
4	Release of lands for departments	30	8	23
5	Release of lands for Local Government Authorities	15	4	4
6	Release of lands for Temples	15	4	4
7	Tax revenue	6,709,333.75	1,837,144.85	6,881,940.27
8	Outstanding Tax revenue	375,314.20	8,498.89	213,008.05
9	Granting land for people do not have lands	400	285	686
10	Conducting mobile services	17	2	13
11	Building renovations			
12	Conducting division day programmes	820	58	648

Estimate and Expenditure Details -2016**Deputy Land Commissioner's Office**

Head	Description	Funded amount	Net expenditure	Balance	Deficit
286-02-01-1001	Salaries & Wages	10,300,000.00	10,354,449.10		54,449.10
286-02-01-1002	Overtime	105,000.00	104,087.31	912.69	
286-02-01-1003	Other allowances	10,050,000.00	10,018,342.40	31,657.60	
286-02-01-1101	Travelling	695,000.00	599,544.61	95,455.39	
286-02-01-1201	Stationary & office requirement	100,000.00	99,999.00	1	
286-02-01-1202	Fuel & Lubricant	285,000.00	260,000.00	25,000.00	
286-02-01-1203	Food & uniforms	12,000.00	12,000.00		
286-02-01-1301	Vehicles	100,000.00	96,140.00	3,860.00	
286-02-01-1302	Plant & machinery	1,200.00	1,200.00		
286-02-01-1303	Building & constructions	30,000.00	19,950.00	10,050.00	
286-02-01-1402	Post & Telecommunication	106,000.00	105,340.54	659.46	
286-02-01-1403	Water & electricity bills	66,490.00	66,154.91	335.09	
286-02-01-1404	Rents & rents for local government	7,300.00	0.00	7,300.00	
286-02-01-1405	Other (Newspapers)	57,600.00	57,560.00	40.00	
286-02-01-1406	Property & loan interests	119,740.00	119,738.03	1.97	
286-02-01-2001	Building & constructions	207,650.00	201,395.23	6,254.77	
286-02-01-2003	Vehicle repairs	161,400.00	161,400.00	0.00	
286-02-01-2105(2)	Nila Mehewara mobile programme	14,000.00	14,000.00	0.00	
286-02-01-2105(3)	Preservation of state lands	2,290.00	0.00	2,290.00	
		<u>22,420,670.00</u>	<u>22,287,301.13</u>	133,368.87	
153-2-3-4-2105	“Bimsaviya” programme	125,200.00	126,797.10		1,597.10
153-2-3-8-2502	E-Slims programme	13,200.00	13,200.00	0.00	
	Total	22,559,070.00	22,427,298.23	131,771.77	

5.1.18 Career Guidance Section

Vision:

World Level Labour Force

Mission

Building a globally competitive labour force and deploying the total strength of our human resources for the socio economic development of Srilanka



Annual progress of Carrer Guidance Section – Polonnaruwa District

Programme	Target	Achievements	Beneficiaries
Career challenges	02	02	62
Self Employment	02	07	217
Ordinary Level	42	41	1450
Advance Level	31	27	1064
Awareness for Teachers	01	01	40
Direction Training	-	-	165
Career Performance	210	-	438
Guidance Service	840	-	820
Direction employment	-	-	382
Employment Societies	01	01	31
Entrepreneurship development	01	01	27
Trainings over requirements	08	10	343
Awareness for Parents	06	12	631
For the persons in danger	56	30	1054
Career Reproduction programme	-	03	90
Registration	-	-	1468
Providing Employments	-	-	120

5.2. Activities performed by Divisional Secretariats

5.2.1. Registrations

Medirigiriya Divisional Secretariat

		New Registrations				Issue of copies		Issue of copies
		Death	Birth	Marriage	Death	Birth	Marriage	Death
(a)	Activities as at 01.01.2016	-	-	-	-	-	-	-
(b)	Applications Received during year 2016	866	-	498	261	3991	871	347
(c)	Total No: of applications to work with (a+b) i	866	-	498	261	3991	871	347
(d)	Applications worked out in 2016	866	-	498	261	3991	871	347
(e)	Remained applications without an action as at 31.12.2016 (c+e)	-	-	-	-	-	-	-

Lankapura Divisional Secretariat

		New Registrations				Issue of copies		
		Death	Birth	Marriage	Death	Birth	Marriage	Death
(a)	Activities as at 01.01.2016	-	-	-	-	-	-	-
(b)	Applications Received during year 2016	28	29	126	68	2479	397	158
(c)	Total No: of applications to work with (a+b) i	28	29	126	68	2479	397	158
(d)	Applications worked out in 2016	28	29	126	68	2479	397	158
(e)	Remained applications without an action as at 31.12.2016 (c+e)	-	-	-	-	-	-	-

Hingurakgoda Divisional Secretariat

		New Registrations				Issue of copies		
		Birth Certificates	Birth Revisions	Marriage	Death	Birth	Marriage	Death
(a)	Activities as at 01.01.2016	-	-	-	-	-	-	-
(b)	Applications Received during year 2016	22	-	483	201	4975	587	531
(c)	Total No: of applications to work with (a+b) i	22	-	483	201	4975	587	531
(d)	Applications worked out in 2016	-	-	-	-	-	-	-
(e)	Remained applications without an action as at 31.12.2016 (c+e)	-	-	-	-	-	-	-

Thamankaduwa Divisional Secretariat

		New Registrations				Issue of copies		
		Birth Certificates	Birth Revisions	Marriage	Death	Birth	Marriage	Death
(a)	Activities as at 01.01.2016							
(b)	Applications Received during year 2016	6165	808	1134	1176	6165	882	1157
(c)	Total No: of applications to work with (a+b) i	6165	808	1134	1176	6165	882	1157
(d)	Applications worked out in 2016	6165	806	1134	1176	6165	882	1157
(e)	Remained applications without an action as at 31.12.2016 (c+e)		02					

Dimbulagala Divisional Secretariat

		New Registrations				Issue of copies		
		Birth Certificates	Birth Revisions	Marriage	Death	Birth	Marriage	Death
(a)	Activities as at 01.01.2016	0	0	0	0	0	0	0
(b)	Applications Received during year 2016	27	28	1007	187	3527	1026	190
(c)	Total No: of applications to work with (a+b) i	0	0	0	0	0	0	0
(d)	Applications worked out in 2016	27	28	1007	187	3524	1026	190
(e)	Remained applications without an action as at 31.12.2016 (c+e)	0	0	0	0	03	0	0

Welikanda Divisional Secretariat

		New Registrations				Issue of copies		
		Birth Certificates	Birth Revisions	Marriage	Death	Birth	Marriage	Death
(a)	Activities as at 01.01.2016	-	-	-	-	-	-	-
(b)	Applications Received during year 2016	21	-	96	76	17	438	64
(c)	Total No: of applications to work with (a+b) i	21	-	96	76	17	438	64
(d)	Applications worked out in 2016	21	-	96	76	17	438	64
(e)	Remained applications without an action as at 31.12.2016 (c+e)	-		-	-	-	-	-

Elahera Divisional Secretariat

		New Registrations				Issue of copies		
		Birth Certificates	Birth Revisions	Marriage	Death	Birth	Marriage	Death
(a)	Activities as at 01.01.2016	-	-	-	-	-	-	-
(b)	Applications Received during year 2016	38	59	309	146	2134	516	101
(c)	Total No: of applications to work with (a+b) i	-	-	-	-	-	-	-
(d)	Applications worked out in 2016	38	59	309	146	2134	516	101
(e)	Remained applications without an action as at 31.12.2016 (c+e)	-	-	-	-	-	-	-

5.2.2. Other License**Medirigiriya Divisional Secretariat**

		Registration of Persons	Pass ports	Timber License	Sand Rock license	Excise License	Fire Arm Recommendations
(a)	No: of applications to work with as at 01.01.2016	-	-	-	-	-	-
(b)	Applications Received during year 2016	1789	-	34	1219	06	05
(c)	Total No: of applications to work with (a+b)	-	-	34	1219	06	05
(d)	Applications worked out in 2016	1789	-	34	1219	06	05
(e)	Remained applications without an action as at 31.12.2016(c+e)	-	-	-	-	-	-
(f)	Grant of Land Permits - 2016	174					

Lankapura Divisional Secretariat

		Registration of Persons	Pass ports	Timber License	Sand Rock license	Excise License	Fire Arm Recommendations
(a)	No: of applications to work with as at 01.01.2016	-	-	-	-	-	-
(b)	Applications Received during year 2016	1572	-	43	62	02	-
(c)	Total No: of applications to work with (a+b)	1572	-	43	62	02	-
(d)	Applications worked out in 2016	1551	-	43	62	02	-
(e)	Remained applications without an action as at 31.12.2016(c+e)	21	-	-	-	-	-
(f)	Grant of Land Permits - 2016	284	-	-	-	-	-

Hingurakgoda Divisional Secretariat

		Registration of Persons	Pass ports	Timber License	Sand Rock license	Excise License	Fire Arm Recommendations
(a)	No: of applications to work with as at 01.01.2016	102	-	1	-	-	-
(b)	Applications Received during year 2016	3438	-	71	2	12	20
(c)	Total No: of applications to work with (a+b)	3540	-	72	2	12	20
(d)	Applications worked out in 2016	3318	-	61	2	12	20
(e)	Remained applications without an action as at 31.12.2016(c+e)	222	-	11	-	-	-
(f)	Grant of Land Permits - 2016	-	-	-	-	-	-

Thamankaduwa Divisional Secretariat

		Registration of Persons	Pass ports	Timber License	Sand Rock license	Excise License	Fire Arm Recommendations
(a)	No: of applications to work with as at 01.01.2016						
(b)	Applications Received during year 2016	4998	360	46	123	23	124
(c)	Total No: of applications to work with (a+b)	4998	360	46	123	23	124
(d)	Applications worked out in 2016	4998	360	46	123	23	124
(e)	Remained applications without an action as at 31.12.2016(c+e)						
(f)	Grant of Land Permits - 2016	99					

Dimbulagala Divisional Secretariat

		Registration of Persons	Pass port	Timber License	Sand Rock license	Excise License	Fire Arm Recommendations	No: of Licenses
(a)	No: of applications to work with as at 01.01.2016	0	0	0	0	0	0	0
(b)	Applications Received during year 2016	3567	2000	51	219	4	0	15
(c)	Total No: of applications to work with (a+b)	0	0	51	219	4	0	15
(d)	Applications worked out in 2016	3558	150	51	219	4	0	15
(e)	Remained applications without an action as at 31.12.2016(c+e)	9	1850	0	0	0	0	0
(f)	Grant of Land Permits - 2016	0	0	0	0	0	0	0

Welikanda Divisional Secretariat

		Registration of Persons	Pass ports	Timber License	Sand Rock license	Excise License	Fire Arm Recommendations
(a)	No: of applications to work with as at 01.01.2016	-	-	-	-	-	-
(b)	Applications Received during year 2016	2294	-	31	405	03	-
(c)	Total No: of applications to work with (a+b)	2294	-	31	405	03	-
(d)	Applications worked out in 2016	2294	-	31	405	03	-
(e)	Remained applications without an action as at 31.12.2016(c+e)	-	-	-	-	-	-
(f)	Grant of Land Permits - 2016	-	-	-	-	-	-

Elahera Divisional Secretariat

		Registration of Persons	Pass port	Timber License	Sand Rock license	Excise License	Fire Arm Recommendations	Grant of Land License
(a)	No: of applications to work with as at 01.01.2016	47						828
(b)	Applications Received during year 2016	2459	300					-
(c)	Total No: of applications to work with (a+b)	2506	300					828
(d)	Applications worked out in 2016	2437	292					-
(e)	Remained applications without an action as at 31.12.2016(c+e)	22	8					828

5.2.3. Samurdhi, Social Service and Disaster Relief – 2016Medirigiriya Divisional Secretariat

	Total No of Subsidy issued	No: of beneficiary families	Total No: of beneficiaries
Dry Ration Subsidy	-	-	-
Nutritious	10495	10495	10495
Samurdhi	5180	5180	5180
Flood Assistance	-	-	-
Drought Assistance	-	5035	5035
Housing Assistance	-	25	25
Glass of Milk programme	-	3185	3185

Lankapura Divisional Secretariat

	Total No of Subsidy issued	No: of beneficiary fami-	Total No: of beneficiaries
Dry Ration Subsidy	-	-	-
Nutritious	-	675	675
Samurdhi	-	3443	3443
Flood Assistance	-	-	-
Drought Assistance	-	-	-
Housing Assistance	-	51	51
Glass of Milk programme	-	6 (මෙර පාසැල්)	830

Hingurakgoda Divisional Secretariat

	Total No of Subsidy issued	No: of beneficiary fami-	Total No: of beneficiaries
Dry Ration Subsidy	-	-	-
Nutritious	9230	-	1135
Samurdhi	4137	4137	4137
Flood Assistance	-	-	-
Drought Assistance	-	2352	9111
Housing Assistance	-	19	72
Glass of Milk programme	-	-	657

Thamankaduwa Divisional Secretariat

	Total No of Subsidy issued	No: of beneficiary families	Total No: of beneficiaries
Dry Ration Subsidy		15	50
Nutritious	9329	9329	9329
Samurdhi	4160	4160	4160
Flood Assistance	-	-	-
Drought Assistance		1798	6294
Housing Assistance		07	29
Glass of Milk programme			3665

Dimbulagala Divisional Secretariat

	Total No of Subsidy issued	No: of beneficiary families	Total No: of beneficiaries
Dry Ration Subsidy	-	-	-
Nutritious	13,516	12062	3659
Samurdhi	4657	4657	4657
Flood Assistance	-	-	-
Drought Assistance	-	4596	17724
Housing Assistance	-	295	295
Glass of Milk programme	-	-	1855

Welikanda Divisional Secretariat

	Total No of Subsidy issued	No: of beneficiary families	Total No: of beneficiar-ies
Dry Ration Subsidy	02	02	11
Nutritious	6042	6042	6042
Samurdhi	2098	2098	2098
Flood Assistance	-	-	-
Drought Assistance	-	8527	29248
Housing Assistance	-	21	68
Glass of Milk programme	-	-	4043

Elaheera Divisional Secretariat

	Total No of Subsidy issued	No: of beneficiary families	Total No: of beneficiar-ies
Dry Ration Subsidy	Did not want to supply		
Nutritious	8436	1833	1833
Samurdhi	2559	2559	2559
Flood Assistance	Did not want to supply		
Drought Assistance	-	12	36
Housing Assistance	-	3	8
Glass of Milk programme	4884	434	434

5.2.4. Business Registration

Medirigiriya Divisional Secretariat

No: of business names registered during the year	146
Total amount of revenue collected in respect of the subject Rs:	69,005.00

Lankapura Divisional Secretariat

No: of business names registered during the year	82
Total amount of revenue collected in respect of the subject Rs:	41,900.00

Hingurakgoda Divisional Secretariat

No: of business names registered during the year	154
Total amount of revenue collected in respect of the subject Rs:	95,364.00

Thamankaduwa Divisional Secretariat

No: of business names registered during the year	353
Total amount of revenue collected in respect of the subject Rs:	179,500.00

Dimulagala Divisional Secretariat

No: of business names registered during the year	203
Total amount of revenue collected in respect of the subject Rs:	108,490.00

Welikanda Divisional Secretariat

No: of business names registered during the year	85
Total amount of revenue collected in respect of the subject Rs:	43,500.00

Elaheera Divisional Secretariat

No: of business names registered during the year	83
Total amount of revenue collected in respect of the subject Rs:	43,575.00

5.2.5. Electricity Objections**Medirigiriya Divisional Secretariat**

No: of electricity objections received during the year	-
Number of disputes solved	-

Lankapura Divisional Secretariat

No: of electricity objections received during the year	3
Number of disputes solved	3

Hingurakgoda Divisional Secretariat

No: of electricity objections received during the year	12
Number of disputes solved	11

Thamankaduwa Divisional Secretariat

No: of electricity objections received during the year	30
Number of disputes solved	30

Dimbulagala Divisional Secretariat

No: of electricity objections received during the year	No
Number of disputes solved	

Welikanda Divisional Secretariat

No: of electricity objections received during the year	-
Number of disputes solved	-

Elaheera Divisional Secretariat

No: of electricity objections received during the year	2
Number of disputes solved	2

5.2.6. Issue of Vehicle Revenue Licenses

Medirigiriya Divisional Secretariat

No: of revenue license issued during the year	15359
Revenue over the same	24,966,622.50

Lankapura Divisional Secretariat

No: of revenue license issued during the year	10275
Revenue over the same	16,431,487.40

Hingurakgoda Divisional Secretariat

No: of revenue license issued during the year	16704
Revenue over the same	31,991,012.50

Thamankaduwa Divisional Secretariat

No: of revenue license issued during the year	23758
Revenue over the same	₹ 48,214,432.00

Dimbulagala Divisional Secretariat

No: of revenue license issued during the year	18294
Revenue over the same	28,560,441.16

Welikanda Divisional Secretariat

No: of revenue license issued during the year	6946
Revenue over the same	10,164,765.00

Elahera Divisional Secretariat

No: of revenue license issued during the year	9435
Revenue over the same	15,421,563.18

5.2.7. Activities Related to Elders

Medirigiriya Divisional Secretariat

	Number	No: of Beneficiaries
Elders committees Established	02	85
Elders Day Care Centers	-	-
Elders homes that are monitored	-	-
Counseling Centers	-	-

Lankapura Divisional Secretariat

	Number	No: of Beneficiaries
Elders committees Established	-	-
Elders Day Care Centers	-	-
Elders homes that are monitored	-	-
Counseling Centers	-	-

Hingurakgoda Divisional Secretariat

	Number	No: of Beneficiaries
Elders committees Established	53	3000
Elders Day Care Centers	-	-
Elders homes that are monitored	-	-
Counseling Centers	-	-

Thamankaduwa Divisional Secretariat

	Number	No: of Beneficiaries
Elders committees Established	48	2400
Elders Day Care Centers	No	-
Elders homes that are monitored	01	17
Counseling Centers	No	-

Dimbulagala Divisional Secretariat

	Number	No: of Beneficiaries
Elders committees Established	48	3650
Elders Day Care Centers	0	0
Elders homes that are monitored	0	0
Counseling Centers	0	0

Welikanda Divisional Secretariat

	Number	No: of Beneficiaries
Elders committees Established	29	1550
Elders Day Care Centers	-	-
Elders homes that are monitored	-	-
Counseling Centers	-	-

Elahera Divisional Secretariat

	Number	No: of Beneficiaries
Elders committees Established	1	105
Elders Day Care Centers	-	-
Elders homes that are monitored	-	-
Counseling Centers	-	-

Events of Elders activities – Elahera Divisional Secretariat**5.2.7. Activities Related to children****Medirigiriya Divisional Secretariat**

No: of Early childhood programmes conducted through Children's Secretariat	-
No: of participants	-

Lankapura Divisional Secretariat

No: of Early childhood programmes conducted through Children's Secretariat	1
No: of participants	1045

Hingurakgoda Divisional Secretariat

No: of Early childhood programmes conducted through Children's Secretariat	02
No: of participants	170

Thamankaduwa Divisional Secretariat

No: of Early childhood programmes conducted through Children's Secretariat	06
No: of participants	730

Dimbulgala Divisional Secretariat

No: of Early childhood programmes conducted through Children's Secretariat	3
No: of participants	1060

Welikanda Divisional Secretariat

No: of Early childhood programmes conducted through Children's Secretariat	07
No: of participants	450

Elahera Divisional Secretariat

No: of Early childhood programmes conducted through Children's Secretariat	7
No: of participants	2692

Children’s dental clinic of Model Village – Elahera Divisional Secretariat



Creation of flower vases by using bamboo



Disabled People’s New Year Festival



Pre School Drawing Competition



Few early childhood development programmes conducted parallel to World’s Children’s Day



5.2.9. Disabled Rehabilitation

Elahera Divisional Secretariat	
No: of Grama Niladhari Wards that Disabled Rehabilitation programme was implemented	28
No of disables that pairs of spectacles were provided	700
No of disables that hearing aids were provided	-
No of disables that wheel chairs were provided	15
No of disables that housing subsidies were provided	10
No of disables that crutches were provided	12
No of disabled children that were directed for education	4



Lankapura Divisional Secretariat	
No: of Grama Niladhari Wards that Disabled Rehabilitation programme was implemented	28
No of disables that pairs of spectacles were provided	5
No of disables that hearing aids were provided	4
No of disables that wheel chairs were provided	3
No of disables that housing subsidies were provided	4
No of disables that crutches were provided	5

Hingurakgoda Divisional Secretariat	
No: of Grama Niladhari Wards that Disabled Rehabilitation programme was implemented	53
No of disables that pairs of spectacles were provided	1411
No of disables that hearing aids were provided	02
No of disables that wheel chairs were provided	10
No of disables that housing subsidies were provided	09
No of disables that crutches were provided	26
No of disabled children that were directed for education	01

Thamankaduwa Divisional Secretariat	
No: of Grama Niladhari Wards that Disabled Rehabilitation programme was implemented	55
No of disables that pairs of spectacles were provided	1000
No of disables that hearing aids were provided	08
No of disables that wheel chairs were provided	16
No of disables that housing subsidies were provided	05
No of disables that crutches were provided	10
No of disabled children that were directed for education	03
No of volunteer organization stabilized	312

Dimbulagala Divisional Secretariat	
No: of Grama Niladhari Wards that Disabled Rehabilitation programme was implemented	56
No of disables that pairs of spectacles were provided	501
No of disables that hearing aids were provided	04
No of disables that wheel chairs were provided	14
No of disables that housing subsidies were provided	13
No of disables that crutches were provided	09
No of disabled children that were directed for education	02

Welikanda Divisional Secretariat	
No: of Grama Niladhari Wards that Disabled Rehabilitation programme was implemented	12
No of disables that pairs of spectacles were provided	1504
No of disables that hearing aids were provided	07
No of disables that wheel chairs were provided	04
No of disables that housing subsidies were provided	-
No of disables that crutches were provided	02

Medirigiriya Divisional Secretariat	
No: of Grama Niladhari Wards that Disabled Rehabilitation programme was implemented	45
No of disables that pairs of spectacles were provided	1000
No of disables that hearing aids were provided	-
No of disables that wheel chairs were provided	03
No of disables that housing subsidies were provided	04
No of disables that crutches were provided	05
No of disabled children that were directed for education	-

5.2.10. Advance issued under Government Officers Advance Account -2016

Medirigiriya Divisional Secretariat

Type of Loan/Advance	No: of Officers	Amount Issued
Festival	57	570,000.00
Special	30	120,000.00
Distress	27	2,415,000.00
Vehicle	-	-
Motor Cycle	-	-
Property	-	-
Others	-	-
Total	114	3,105,000.00

Lankapura Divisional Secretariat

Type of Loan/Advance	No: of Officers	Amount Issued
Festival	53	530,000.00
Special	32	128,000.00
Distress	29	1,919,220.00
Vehicle	-	-
Motor Cycle	-	-
Property	-	-
Others	-	-
Total	114	2,577,220.00

Hingurakgoda Divisional Secretariat

Type of Loan/Advance	No: of Officers	Amount Issued
Festival	61	610,000.00
Special	28	112,000.00
Distress	23	1,830,472.00
Vehicle	-	-
Motor Cycle	-	-
Property	-	-
Others	01	7500.00
Total	113	2,559,972.00

Thamankaduwa Divisional Secretariat

Type of Loan/Advance	No: of Officers	Amount Issued
Festival	66	660,000.00
Special	26	104,000.00
Distress	43	3,559,035.00
Vehicle	-	-
Motor Cycle	-	-
Property	-	-
Others	-	-
Total	135	4,323,035.00

Dimbulagala Divisional Secretariat

Type of Loan/Advance	No: of Officers	Amount Issued
Festival	60	600,000.00
Special	32	128,000.00
Distress	30	2,668,000.00
Vehicle	1	6,000.00
Motor Cycle	0	-
Property	0	-
Others	0	-
Total	123	3,402,000.00

Welikanda Divisional Secretariat

Type of Loan/Advance	No: of Officers	Amount Issued
Festival	38	380,000.00
Special	11	44,000.00
Distress	18	1,307,432.00
Vehicle	-	-
Motor Cycle	-	-
Property	-	-
Others	-	-
Total	67	1,731,432.00

Elahera Divisional Secretariat

Type of Loan/Advance	No: of Officers	Amount Issued
Festival	51	510,000.00
Special	30	120,000.00
Distress	24	1,580,118.00
Vehicle	-	-
Motor Cycle	-	-
Property	-	-
Others	-	-
Total	105	2,210,118.00

5.2.11 Details on Religious & Cultural Activities**Elahera Divisional Secretariat**

1. Kuda Minneri Devala Perahara -Elahera
2. Cultural festival
3. Donating Dhamma School Equipment for the Sucharithodaya Dhamma School.
4. Donating Dhamma School Equipment for the Vijayagnana Dhamma School, Elahera.
5. Building a Toilet to the Vijayagnana Dhamma School, Elahera.

Information regarding the final development projects which were directly provided to the Divisional Secretariat by Ministries and Departments except the Ministry of Economic Development

Project Description	Amount	Beneficiaries' Details
Rural Economic Promotion Programme	42,000,000.00	30470
Rural Road Development Programme - Phase I	9,000,000.00	1280
Rural Road Development Programme – Phase II	28,000,000.00	1755
Provincial Decentralized Budget	4,754,300.00	1365
Outside Drainage Canal Project, Ambanganga Orubendisiyambalawa 04	290,000.00	1238
Drainage Canal Project, Kuruviyaya	780,000.00	1450
Drainage Canal Project, Gangeyaya 504	466,000.00	1089
Canal Project, Track 12	295,000.00	1345
Pekkulama (Spillway Canal close to the Rathu Palama) Project	3398,000.00	1172
Elikimbulawa Stone Spillway Canal Project	880,000.000	1300
Building a toilet for the Pibidena Singithi Pre- School, Atharagallawa (Funded by the Ministry of National Coexistence, Dialogue and Official Languages)	150,000.00	100
Developing the Mahaweli ground in Bakamoona	99411.20	unlimited
Developing the Ranahansa playground in Kottapitiya, Batuhena	200,000.00	unlimited
Developing the playground in Puwakgahaulpatha	2,060,618.50	unlimited
Developing the Ranamaura playground in Atthanakadawala	100,000.00	unlimited
Building the disabled access way in Grama Niladhari Office, Damanayaya	43,000.00	15

Lankapura Divisional Secretariat

Project	Allocated Amount (Rs :)	Details of Beneficiaries
Sambuddha Jayanthiya 2600	150,000.00	Sri Priyadarshanarama Daham School, B.O.P. 400
	150,000.00	Sri Priyadarshanarama Kashayapa Daham School,
	150,000.00	Sri Shayakyabimbarama Daham School, Pulas-
	150,000.00	Sri Sudarmarama Kashayapa Daham School,
	150,000.00	Sri Neeegradarama Indrajothi Daham School, Weera-
	150,000.00	Sri Sugathabimbarama Sugathasiri Daham School,
Punyagrama Development Programme	150,000.00	Sri Bodhiraja Vihraya , 07 th Mile Post
	150,000.00	Sri Isipathanarama Temple, Kirimetiya
	150,000.00	Sri Shayakyabimbaramaya ,Pulasthigama

Divisional Secretariat – Medirigiriya

Project	Allocated Amount (Rs :)	Details of Beneficiaries
Construction of toilet system of Sri Mihidu Daham School under the provisions of Ministry of Buddhasasana	200,000.00	Sri Mihidu Daham School
Providing equipment for the building of Sri Nanda Daham School.	150,000.00	Sri Nanda Daham School
Laying tiles for the building of Sri Pryadarshana Daham School	150,000.00	Sri Priyadarshana Daham
Completing the remaining constructions of the building of Sri Bosath Daham School	150,000.00	Sri Bosath Daham School
Providing equipment for Sri Mihidu Daham School	50,000.00	Sri Mihidu Daham School
Providing equipment for Sri Wimala Daham School	100,000.00	Sri Wimala Daham School

Divisional Secretariat – Welikanda

Project	Allocated Amount(Rs :)	Details of Beneficiaries
Completion of work of Sri Mutthu Vinayagar Devala	200,000.00	Villagers of Thichchena village
Rehabilitation of Sri Sudarshanarama Viharaya	200,000.00	Villagers of Maithreegama village

Details on Religious & Cultural Activities

Details on completed projects given directly to the divisional secretary by other ministries and departments except ministry of economic development

Project	Allocated Amount (Rs)	Details of Beneficiaries
Ministry of Buddhasasana		
Repairs to the Bikku Hostel of Bendiwewa Mahindarama Temple	500,000.00	Common
Construction of alms giving hall and abode of Rathnapala Bikku Vivekassramaya, 04 th , Canal, Thamankaduwa	500,000.00	Common
Completion the construction of nuns abode of Asarana Sarana Sugatha Vishakaramaya of Nis-sankamalla place	500,000.00	Common
Construction of a Daham school building with a library for Sri Bodhirukkarama Dhaham School, Parakkmasamudraya	500,000.00	Common
Construction of a Daham school building with a library for Sri Bodhirukkarama Dhaham School, 04 th Canal	500,000.00	Common
Completion remaining work of abode and Dharmasala of Ganangolla Sri Shakyasingharamaya	500,000.00	Common
Completion remaining work of abode and dharmasala of Lakshauyana Sri Veluwanaramaya	500,000.00	Common
Development of Wijayabahupura Uththararama temple	500,000.00	Common
Sanitary facilities of Mohideen Jumma mosque	100,000.00	Common
Sanitary facilities of Mohideen Jumma mosque	100,000.00	Common
Providing equipment for Sri Sangamiththa Daham School	50,000.00	Common
Providing building assistance for Siri Sobhitha Daham School	100,000.00	Common
Provincial council Decentralized		
Providing material for the construction of abode of Thamankaduwa Sri Vidyasara Pirevena	15,000.00	Common
Providing material for the construction of parapet wall of Thamankaduwa Medamaluwa Maha viharaya	25,000.00	Common
Providing material for the construction of Dharmasala of New Town Ganangolla Sri Shakyasingharama Temple	10,000.00	Common
Providing a grass cutter for Mohideen mosque of Gallella, Majidpura	12,500.00	Common
Providing a grass cutter for Alhuda Jumma mosque of Manikkampattiya	12,500.00	Common
Providing a grass cutter for Jumma Hasanath mosque of Gallella, Kusumgama	12,500.00	Common
Providing chairs for Dharmaraja Temple, Kalahagala	10,000.00	Common
For further constructions of stupa of Sri Wijayasingaramaya, Kalingaela, Track 29	70,000.00	Common
Providing material for the construction of Bodhi Prakara with atawisi budha mandiraya (28 Buddhist statue chambers) of Bendiwewa Upekaramaya	20,000.00	Common
Providing material for the construction of abode of Sri Sudarshanaramaya, Ethumalpitiya	50,000.00	Common
Providing cement for Bodhi Prakara side wall of Sri Subodharamaya of Kotaleeya, Gallella, Kusumgama	30,000.00	Common
Providing required material for the construction of abode of purana Isipathnaramaya of Polonnaruwa town	50,000.00	Common
Thamankaduwa literary festival	30,000.00	Common
Construction of the building of Siri Sobhitha Daham school under ministry of buddhasasana	100,000.00	Common
Providing equipment for Sri Sangamiththa Dhaham school	50,000.00	Common
Total	4,847,500.00	

Divisional Secretariat – Dimbulagala

Project	Allocated Amount (Rs :)
Rehabilitation of Manampitiya Sri Sitthi Vinayagar Kovil	100,000.00
Construction of cubicals for meditation at Dimbulagala Aranya Senasana	980,000.00
Completion of remaining construction work of alms giving hall of Sri Poorwarama Raja Maha Vihara, Yaya 04	150,000.00
Development of Meththaramaya , Siripura	150,000.00
Development of Sri Poorwaramaya, Nikawathalanda	150,000.00
Development of Mahasen Raja Maha Vihara, Weheragala	150,000.00
Development of Sri Mihidu Sadaham Buddhist Center , Pahala Ellewewa	150,000.00
Development of Sri Keththarama , Kudawewa	150,000.00
Development of Sri Wajiraramaya ,Bogaswewa	150,000.00
Construction of Stupa at Kadjuwatta Aranya Senasana	500,000.00
Development of bikku hostel ,alms giving hall and visitor's chamber and construction of gateway for entrance and landscapping surrounding of stupa ,shrine and other area.	500,000.00
Completion the remaining work of the abode of Sri Sugatharama Temple, Kalukele.	5,00,000.00
Development of Sri Saranankara Daham school of Sri Isipathanaramaya , Rathmalkandiya	2,00,000.00
Development of Daham school of Kanichchagala Purana Vihara	150,000.00
Construction of a toilet system at Sri Sudarshanaramaya Mahaulpatha	200,000.00
For the abode of Sri Dhammarakkitha Viveka Senasanaya, Maldeniya	200,000.00
Developing the building of Sri Dalada Daham School	200,000.00
Developing the building of Siri Ariyawansha Daham School	100,000.00
Sri Saddhakeerti Daham School , Damanewewa, Nuwaragala	100,000.00
Sri Sudarshanarama Daham School , Mahaulpatha, Kashapapura	100,000.00
Sri Anomadassi Daham School , Warapitiya, Ruhunugama	50,000.00
Sri Darmodaya Daham School, Medagama	50,000.00

Divisional Secretariat Hingurakgoda

Project	Allocated Amount (Rs:)	Allocated Amount (Rs:)
Construction of Daham school building of Sri Alokarama Viharaya, Galoya Handiya, Rotawewa	150,000.00	150,000.00
Construction of Daham school building of Sri Bodhirukkaramaya	150,000.00	150,000.00
Construction of Daham school building of Sri Mahinda Meditation Center	150,000.00	150,000.00
Construction of Daham school building of Sri Alokarama Viharaya, Galoya Handiya, Rotawewa	122,515.99	122,515.99
Completion of the constructions of Darmasala, Daham school building and Buddha mandiraya	500,000.00	500,000.00
Construction of Bodhi Prakara and completion of the remaining work of abode of Sri Shaila-	500,000.00	500,000.00
For the building of Sri Dhirananda Daham school	100,000.00	100,000.00
Providing Daham school equipment for Dhammaloka Daham Sevana Daham school	50,000.00	50,000.00
Raja Ela ,Mahasen Mawatha Kaludekada Magulmaduwa Purana Viharaya	200,000.00	200,000.00
Sri Sasanodaya Daham school building of Sri Vivekarama Temple	150,000.00	150,000.00
For the toilets of Daham school of Sri Mahasen Maha Viharaya	150,000.00	150,000.00
Development of Bodhirukkarama temple	377,484.01	377,484.01
Paluwewa Rathna meditation center	100,000.00	100,000.00
Materials for the Daham school building of Sri Sudarshanarama Temple	150,000.00	150,000.00
Sheets for a hut – Sri Mahinda Meditation Center	500,000.00	500,000.00
Sheets for a hut – Wijaya Dharmayathanaya	500,000.00	500,000.00
Repairs to the shrine of Sri Bodhirajaramaya	500,000.00	500,000.00
Sheets for a hut – Sri Mangala Bodhirajaramaya	250,000.00	250,000.00
Daham school building of Sri Bodhirajaramaya	200,000.00	200,000.00
Abode of Sri Bodhirajaramaya	100,000.00	100,000.00
Plastic chairs for the Daham school of Sumangalarama temple	20,000.00	20,000.00
Providing desks for Sri Ananda bodhi Daham school	25,000.00	25,000.00
Providing 10 chairs for Boralukanda temple	7,000.00	7,000.00
Completion of “Atawisi Budu Kuti” of Sri Sumangalaramaya	100,000.00	100,000.00
Abode of Ashokaramaya	100,000.00	100,000.00
Puranagama Ananda Maithriya Daham school building	105,000.00	105,000.00
For Hingurakgoda Buddhist center	240,000.00	240,000.00
For Jinendrarama temple Track 14	100,000.00	100,000.00
For Isipathanarama temple 06 th canal	100,000.00	100,000.00
Remaining development work of Sri Janaraja temple	100,000.00	100,000.00
Completion the remaining work of library building of Vivekaramaya, Hathamuna	100,000.00	100,000.00

Completion the remaining work of Daham school building	150,000.00	150,000.00
Completion the remaining work of parapet wall with gate way of Sri Neegrharamaya	100,000.00	100,000.00
Rehabilitation of Isipathanarama temple 06 th canal	300,000.00	300,000.00
Completion the remaining work of Daham school building	150,000.00	
Completion the remaining work of parapet wall with gate way of Sri Neegrharamaya	100,000.00	
Rehabilitation of Isipathanarama temple 06 th canal	300,000.00	
Completion of remaining construction of abode of Sri Sumangalaramaya , Minneriya	100,000.00	
Completion the remaining work of multipurpose building of Abhinawaramaya , Erigeoya	100,000.00	
Carrying out remaining development work of Araliya Uyana Temple	100,000.00	
Carrying out remaining development work of Ashokarama Temple	100,000.00	
For repair works Boralukanda temple	15,000.00	
Gateway of Sri Neegrharamaya , Kaudulla	100,000.00	
Repairs to the development committee building of Sama Viharaya , Pinpara	50,000.00	
Daham school building of Sri Sumangalaramaya, Minneriya	50,000.00	
Meditation center constructed at Gam Udawa	40,000.00	
Toilet system of Abhinawaramaya, Erigeoya	30,000.00	
Construction of gateway at Sri Shailabimbaramaya , Batukotuwa	20,000.00	
Providing loudspeaker to Rathna Meditation center.	30,000.00	
Construction of shrine at Sri Swarnathilakaramaya	20,000.00	

5.2.12. Other programmes conducted at Divisional Secretary Level

Elahera Divisional Secretariat

Awareness programmes for preschool teachers



Projects implemented through Social Development Section



Atanakadawala fair constructed over the decentralized funds have been peoplezed



Disaster Relief Service

Housing Aids

Mr. I.G.Dhanapala's house of kottapitiya south division was partly damaged due to falling a tree as a result of heavy rain and wind.



Providing drinking water



5.3 Financial Management

5.3.1 Expenditure Report of Other Departments-2016

Head	Ministry /Department	Funds Received	Total Expenditure	Balance
001	President office	13,594,825.00	12,090,842.62	1,503,982.38
002	Prime Minister's Office	74,402.00	74,402.00	-
103	Ministry of Defense	30,000.00	30,000.00	-
104	Ministry of National Policies & Economic Affairs	400,940,998.15	308,918,641.36	92,022,356.79
106	Ministry of Disaster Management	41,909,564.95	35,518,132.44	6,391,432.51
110	Ministry of Justice	4,087,430.00	3,627,406.00	460,024.00
118	Ministry of Agriculture	9,447,102.49	9,360,149.08	86,953.41
120	Ministry of Child Development & Women's Affairs	168,862,873.90	157,195,967.65	11,666,906.25
124	Ministry of Social Service	263,023,697.00	255,592,832.00	7,430,865.00
126	Ministry of Education	942,234.00	942,233.76	0.24
130	Ministry of Public Administration & Management	2,442,567.77	2,442,246.27	321.50
145	Ministry of Prison Reforms, Rehabilitation, Resettlement & Hindu Religious Affairs	210,000,000.00	177,622,605.46	32,377,394.54
151	Ministry of Fisheries & Aquatic Resources Development	1,995,387.79	1,935,526.16	59,861.63
153	Ministry of Lands	338,400.00	323,418.10	14,981.90
154	Ministry of Rural Economics	29,319,550.00	24,497,200.87	4,822,349.13
155	Ministry of Provincial Council & Local Government	871,160.00	855,399.49	15,760.51
157	Ministry of National Co Existence , Dialog & Official Languages	2,803,023.60	2,720,883.55	82,140.05
162	Ministry of Megapolis & Western Development	735,000.00	735,000.00	-
163	Ministry of Internal Affairs , Wayamba Development & Cultural	210,000.00	160,559.95	49,440.05
182	Ministry of Foreign Employment Promotion	9,754,890.16	9,661,580.84	93,309.32
196	Ministry of Science, Technology & Research	807,125.75	732,839.20	74,286.55
197	Ministry of Skill Development & Vocational Training	37,800.00	18,682.50	19,117.50
198	Ministry of Irrigation & Water Resources Management	3,551,576.80	3,418,664.47	132,912.33
201	Department of Buddhist Affairs	13,867,850.00	12,204,892.49	1,662,957.51
206	Department of Cultural Affairs	486,400.00	461,137.00	25,263.00
210	Department of Government Information	12,000.00	12,000.00	-
216	Department of Social Services	4,406,650.30	4,380,558.36	26,091.94
217	Ministry of Probation & Child Care	4,859,673.44	4,859,163.10	510.34
219	Department of Sports Development	6,502,164.02	5,719,008.94	783,155.08
227	Department of Registration of Persons	5,408,811.25	5,374,049.48	34,761.77
252	Department of Census & Statistics	842,013.80	718,171.55	123,842.25
253	Department of Pensions	72,726,867.49	68,914,772.85	3,812,094.64
254	Department of Registrar General	1,117,025.00	837,100.00	279,925.00
284	Department of Wild Life Conservation	2,821,404.76	2,778,270.00	43,134.76
285	Department of Agriculture	250,000.00	249,950.43	49.57
286	Department of Land Commissioner General	22,606,669.00	22,482,684.13	123,984.87
304	Department of Meteorological	188,200.00	188,200.00	
307	Department of Motor Traffic	4,530,748.76	4,403,136.20	127,612.56
326	Department of Community Based Correction	22,000.00	4,000.00	18,000.00
327	Department of Land Use Policy Planning	1,462,335.00	1,439,566.00	22,769.00
328	Department of Manpower & Employment	1,092,116.66	1,078,626.70	13,489.96

5.3.2. Monthly revenue collection

REVENUE 2016

REV HEAD	JANUARY	FEBRUARY	MARCH	APRIL	MAY	JUNE	JULY	AUGUST	SEPTEMBER	OCTOBER	NOVEMBER	DECEMBER	TOTAL
10.02.07.00													
10.03.03.00													
10.03.07.02	745,000.00	810,700.00	752,750.00	545,800.00	748,500.00	858,650.00	898,250.00	862,000.00	783,050.00	723,450.00	702,500.00	727,550.00	9,158,200.00
10.03.07.03	7,440.00	12,967.50	9,630.00	6,900.00	15,322.50	13,050.00	8,940.00	9,645.00	5,767.50	10,995.00	10,417.50	8,070.00	119,145.00
10.03.07.05	10,680.00	7,790.00	2,780.00	720.00	3,290.00	1,550.00	5,760.00	2,870.00	13,280.00	8,420.00	23,070.00	17,540.00	97,750.00
10.03.07.99	567,325.00	632,969.68	497,243.00	329,594.00	459,129.50	541,968.00	383,854.00	494,164.00	410,430.72	619,713.20	458,632.00	374,116.80	5,769,139.90
10.03.90.05													
10.04.01.01													
20.01.01.01													
20.02.01.01	156,491.30	145,045.94	154,872.66	179,682.75	117,282.52	205,994.59	237,816.20	195,941.18	192,364.84	166,584.86	179,476.50	171,275.70	2,102,829.04
20.02.01.02													
20.02.01.03	71,990.30	804,026.81	293,984.90	555,981.00	1,156,575.25	1,812,450.29	1,177,775.90	2,220,428.25	5,196,316.84	1,504,811.47	779,658.23	3,836,385.69	19,410,384.93
20.02.02.00													
20.02.02.01													
20.02.02.99	289,216.20	298,422.68	290,186.34	293,813.87	299,686.04	315,621.79	281,592.96	352,156.97	320,557.50	323,728.14	309,241.54	320,541.66	3,694,765.69
20.03.02.03	16,500.00	25,500.00	66,750.00	34,100.00	49,500.00	36,000.00	81,250.00	34,500.00	35,500.00	32,250.00	25,750.00	17,750.00	455,350.00
20.03.01.00													
20.03.03.01													
20.03.02.07													
20.03.02.09													
20.03.02.13	106,500.00	9,000.00	8,250.00	8,000.00	362,500.00			3,000.00	1,000.00			1,000.00	499,250.00
20.03.02.14	3,469,715.00	3,272,100.00	2,297,660.00	1,852,550.00	2,250,180.00	2,904,500.00	9,883,920.00	3,118,950.00	2,670,650.00	3,399,375.00	3,873,025.00	6,471,768.00	45,464,393.00
20.03.02.18													
20.03.02.99	1,700.00	18,900.00	3,210.00	4,010.00	154,530.73	3,500.00	43,372.96	4,200.00	2,700.00	7,800.00	1,500.00	700.00	246,123.69
20.03.90.00													
20.03.03.00													
20.03.03.02	1,500.00	4,500.00	1,200.00	200.00	1,750.00	300.00	500.00	100.00		400.00	650.00	100.00	11,200.00
20.03.99.00	124,077.84	126,919.51	277,069.92	742,434.46	1,240,477.10	554,569.13	1,593,685.28	917,949.20	3,535,768.02	806,574.71	13,791,291.66	698,926.21	24,409,743.04
20.04.01.00	1,001,732.45	1,015,560.73	1,551,565.32	1,211,902.56	1,226,594.72	1,208,950.95	1,216,513.45	1,211,804.74	1,204,756.12	1,201,474.61	1,208,848.78	1,192,913.64	14,452,618.07
20.05.99.00													
20.06.02.00	1,300.00	23,350.00	129,820.00	9,200.00	29,640.00	38,080.00		4,440.00	38,880.00	84,780.00			359,490.00
TOTAL	6,571,168.09	7,207,752.85	6,336,972.14	5,774,888.64	8,114,958.36	8,495,184.75	15,813,230.75	9,432,149.34	14,411,021.54	8,890,356.99	21,364,061.21	13,838,637.70	126,250,382.36

5.3.3. Summary of Financing Expenditure by Programme

Name of Ministry / Department / District Secretariat : District Secretariat - Pol-
onnaruwa

Expenditure Head No : 275

Expenditure Head No : 1, Operational Programme

code	Financing Description of Items	Programme 1 *		Programme 2 *		Grand Total		
		Net Provision ** 1	Actual Ex- penditure 2	Net Pro- vision ** 3	Actual Expendi- ture 4	Net Provision ** 5	Actual Ex- penditure 6	percent- age** of Expendi- ture (6÷5) X100
11	Domestic Funds	6,063,735,000	3,876,138,777			6,063,735,000	3,876,138,777	64
12	Foreign Aid - Loan							
13	Foreign Aid - Grant							
14	Reimbursable Foreign Aid - Loan							
15	Reimbursable Foreign Aid - Grant							
16	Counterpart Fund							
17	Foreign Aid related Domestic Funds							
21	Special legal services							
	Total	6,063,735,000	3,876,138,777			6,063,735,000	3,876,138,777	64

5.3.4. Appropriation Account by Programme - 2016

Name of Ministry / Department / District Secretariat : District Secretariat - Polonnaruwa

Expenditure Head No : 275

Programme No. & Title : 1, Operational Programme

Summary of Recurrent and Capital Expenditure

Nature of Expenditure with DGSA format Reference	(1)	(2)	(3)	(4)	(5)	(6)
	Provision in Budget Estimates Rs	Supplementary Provision and Supplementary Estimate Allocation Rs	Transfers in terms of the F.R. 66 and 69 Rs	Total Net Provision (1+2+3) Rs	Total Expenditure Rs	Net Effect Savings/(Excess) Rs
(a) Recurrent (DGSA 3)	369,000,000	795,000	0	369,795,000	363,812,394	5,982,606
(B) Capital (DGSA 4)	565,000,000	5,128,940,000	0	5,693,940,000	3,512,326,383	2,181,613,617
Total	934,000,000	5,129,735,000	0	6,063,735,000	3,876,138,777	2,187,596,223

5.3.5. Summary of Control Accounts for Advance & Deposit Accounts - 2016

Expenditure Head No :275

Name of Ministry / Department / District Secretariat : District Secretariat - Polonnaruwa

Name of Advance / Deposit Account	Account No.	As per Department Books				Balance as per Treasury Books as at 2016/12/31 Rs.
		Opening Balance as at 2016/01/01	Debits during the year	credits during the year	Balance as at 2016/12/31	
		Rs.	Rs.	Rs.	Rs.	
I. Advances to Public Officers	8493/0/0/0275/0011	78,193,285.63	21,070,939.50	18,351,738.05	80,912,487.08	80,912,487.08
II. Other Advances	8493/0/0/0275/0012	0.00	3,461,801.00	4,719,333.00	1,257,532.00	1,257,532.00
III Miscellaneous Advances						
IV Deposits						
(i) General Deposits	6003/0/0/51/0/0	252,185,292.34	2,053,741,917.52	2,049,231,430.43	247,674,805.25	247,674,805.25
(ii) Other Deposits						

I hereby certify that the closing balances of the above Advance Accounts and Deposit Accounts were reconciled with the respective lists of individual balances